

Galaxy Narrow Upper Cabinet

Technical Specifications & Assembly

Galaxy Narrow Upper Cabinet

Product Features



This new upper cabinet pullout offers better storage options when designing your upper cabinets. With a left side mounted slide that is concealed and offers access from either side, you can add this fantastic new pullout to any project.

- For 762mm (30") and 915mm (36") tall upper cabinets
- Available for 150 (6") wide cabinets
- Left side mounted, full extension, soft-close slide
- Concealed slides allow full access from either side
- Door-mount bracket includes 6-way adjustment
- Two fixed position shelves - 762mm height
- Three fixed position shelves - 915mm height
- Anti-slip melamine bottom baskets are TSCA Title VI compliant
- Load capacity: 30kg (66lbs)

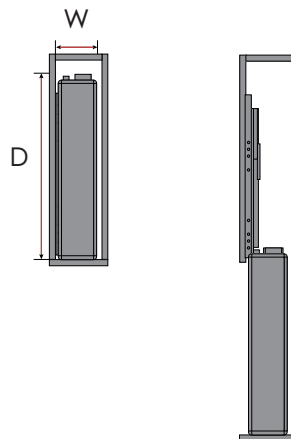
Complete Kit

	Description	Finish	Part#
W x H x D	107 x 550 x 288mm (4 3/16 x 21 5/8 x 11 5/16")	Anthracite Dark Grey	041-VGSW630-AG
W x H x D	107 x 550 x 288mm (4 3/16 x 21 5/8 x 11 5/16")	White / Chrome	041-VGSW630-WHC
W x H x D	107 x 812 x 288mm (4 3/16 x 32 x 11 5/16")	Anthracite Dark Grey	041-VGSW636-AG
W x H x D	107 x 812 x 288mm (4 3/16 x 32 x 11 5/16")	White / Chrome	041-VGSW636-WHC

Minimum Interior Cabinet Dimensions

W x H x D 107 x 550 x 288mm (4 3/16 x 21 5/8 x 11 5/16")

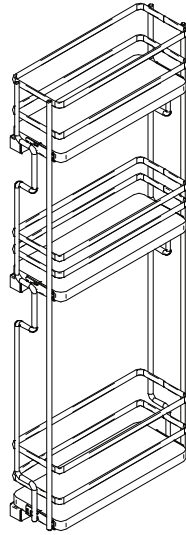
W x H x D 107 x 812 x 288mm (4 3/16 x 32 x 11 5/16")



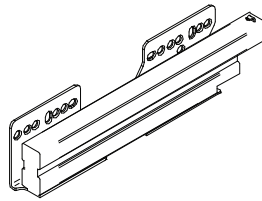


What's In The Box

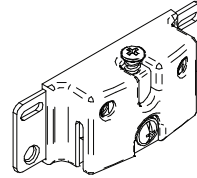
1. x2



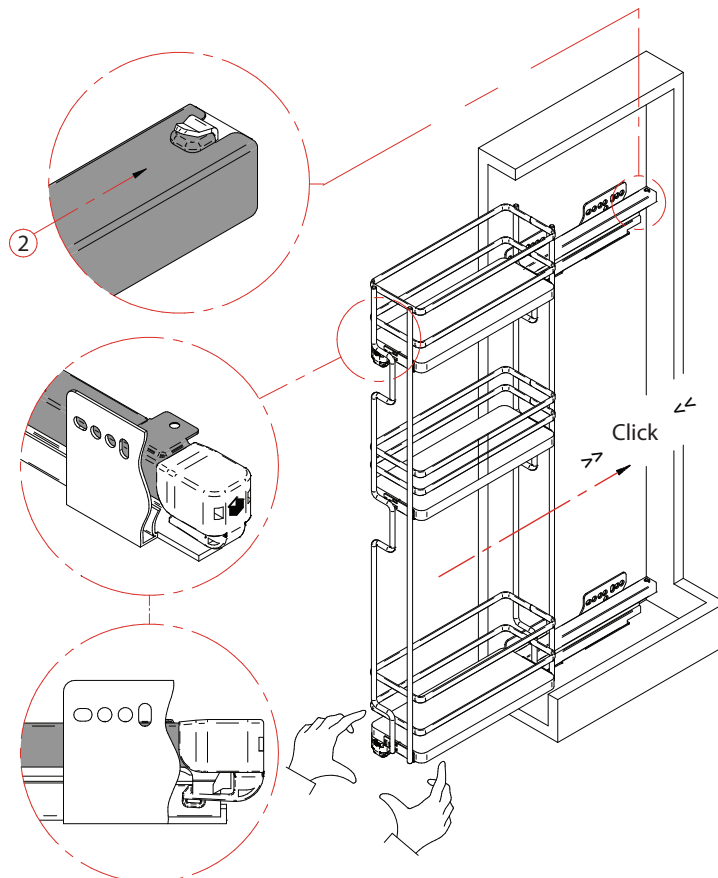
2. x2



3. x2



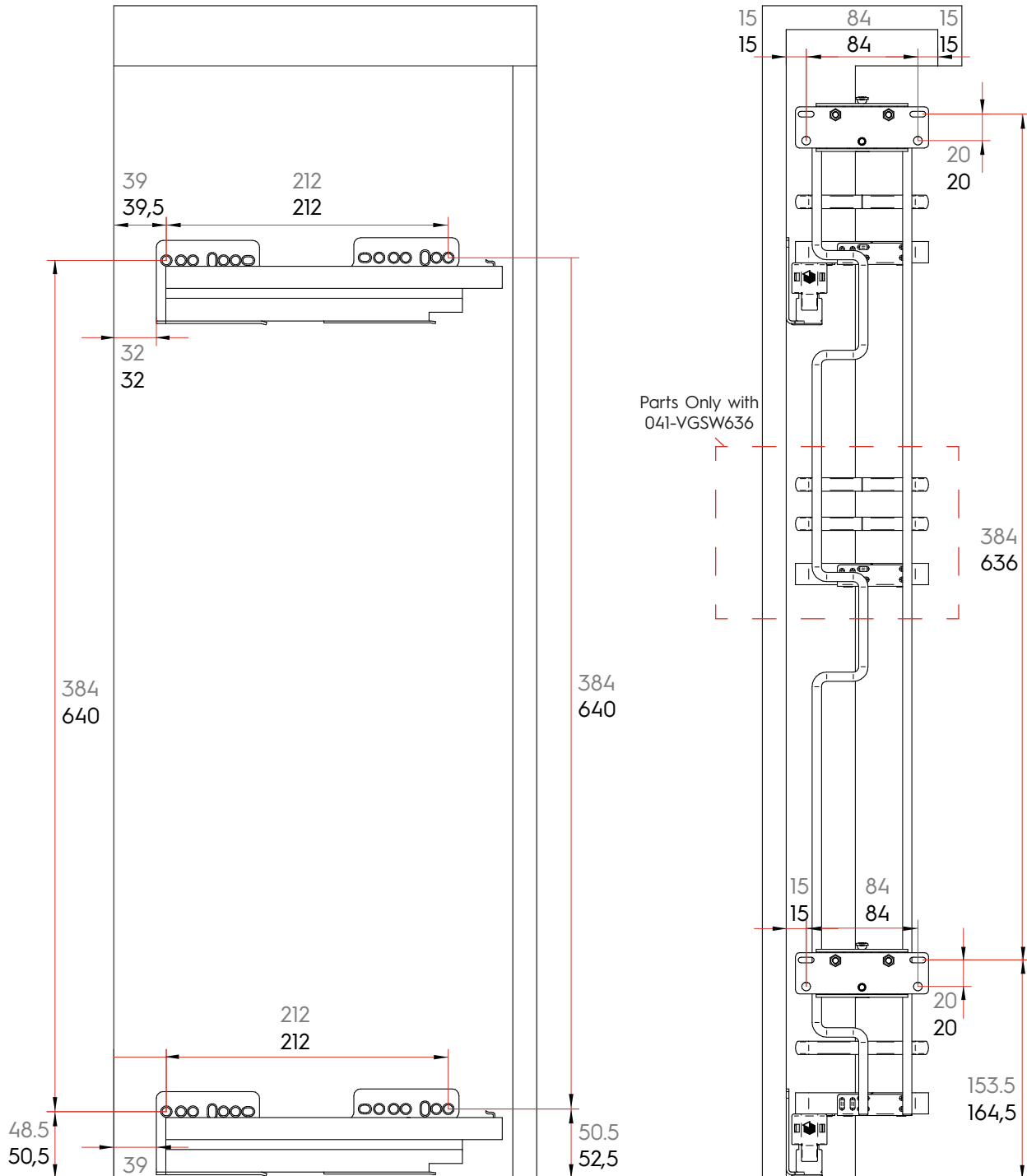
Step #1





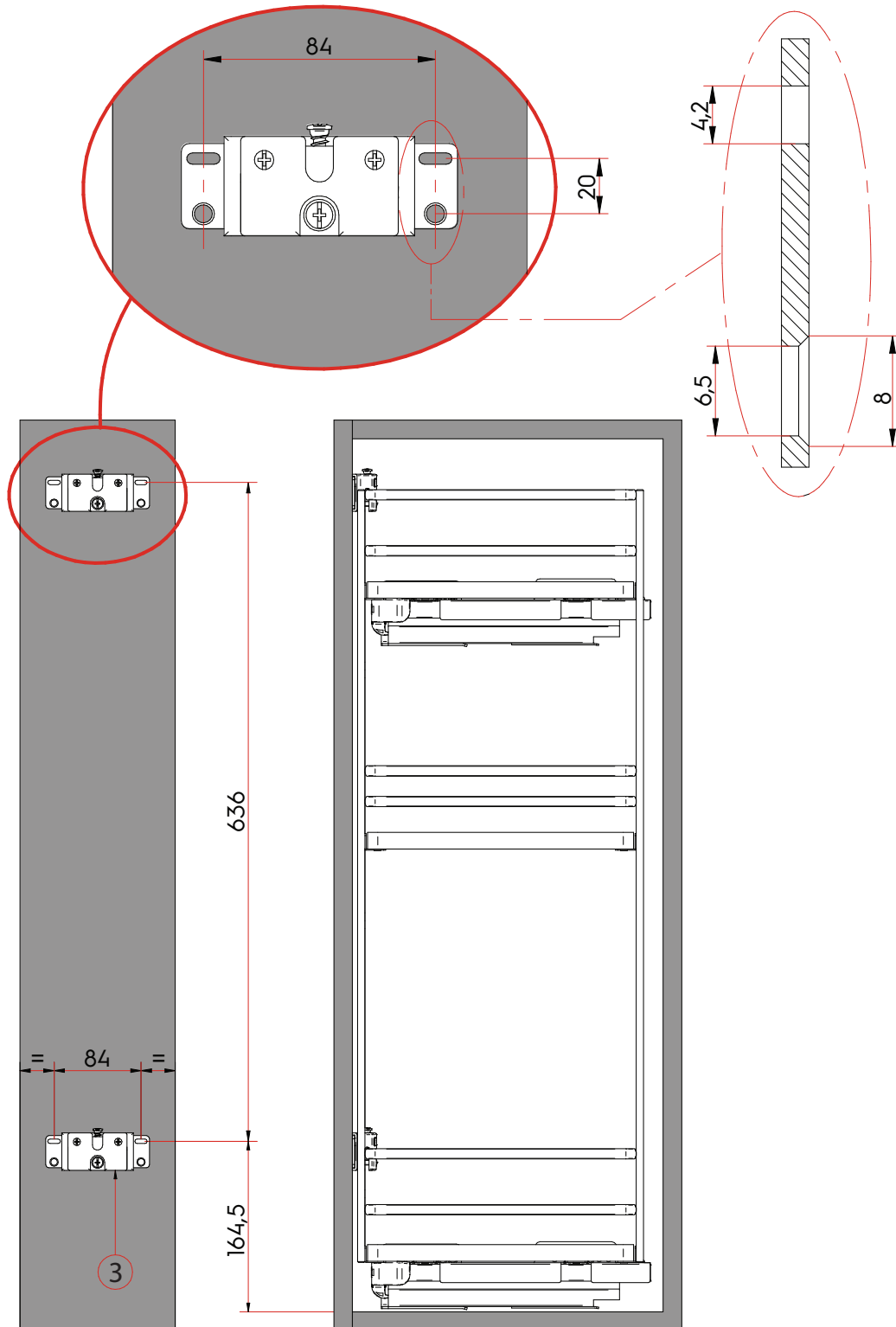
Step #2

Grey for 041-VGSW630
Block for 041-VGSW636





Step #3





Step #4

