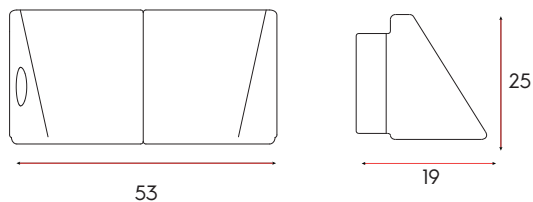
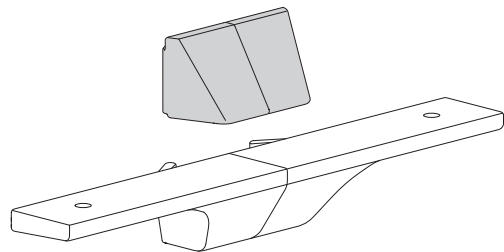


Top Mount Bracket



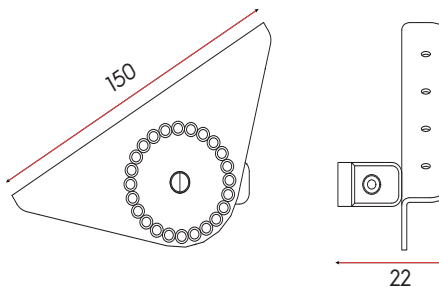
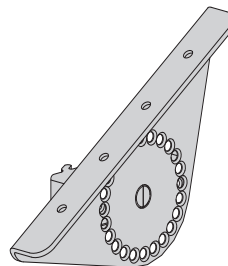
Features:

- Comes with x 1 bracket, 2 protective bumper inserts
- Required for glass shelves
- Suggested for pullout drawers or heavier cabinets based upon expected load
- Easily adjustable for any thickness of glass or cabinets

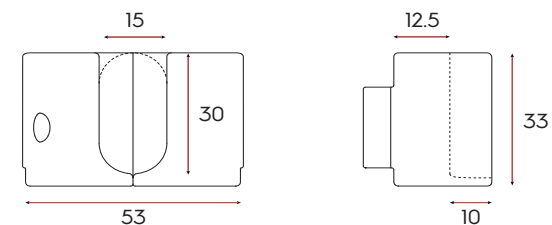
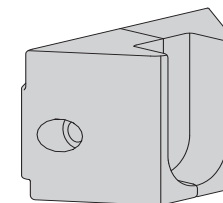
Angled Shelf Holder

Features:

- Allows for full 360° adjustment in increments of 15°
- Designed for wooden shelves only
- Perfect to create shoe racks or magazine displays



Closet Rod Holder



Features:

- Suitable for Oval 15x30mm Closet Rods
- Fully adjustable to any height
- Cut your closet rod 26mm (2 x 13mm) less than the total horizontal length to fit between two holders