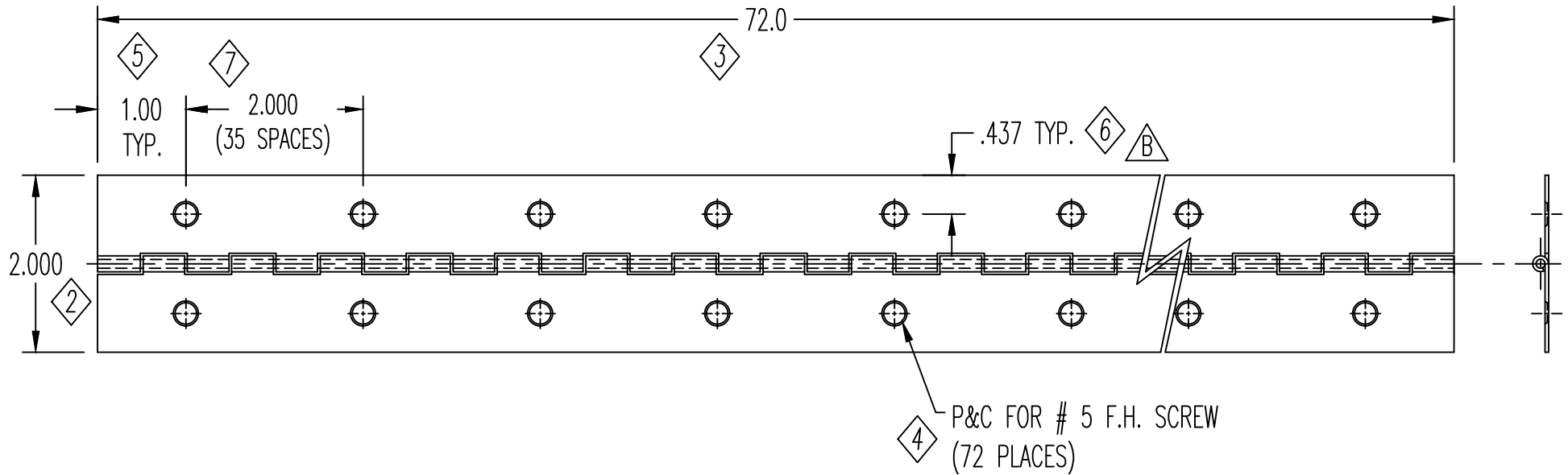


EV	DATE			CHANGE DESCRIPTION	CHG	CKD
	Y	M	D			
	92	04	22	RELEASED		
A	93	02	08	REDRAWN		
B	94	05	18	.437 WAS .406		
C	03	07	08	STEEL \pm .005 WAS CRS \pm .004		
D	03	11	04	ADDED ANTIQUE BRASS		

- ALL DIMENSIONS ARE IN INCHES
- DRAWINGS ARE NOT TO SCALE
- KNUCKLE PATTERN MAY VARY
- SPECIFICATIONS APPLY BEFORE FINISH



SPECIAL OPERATIONS - STAKED - ZP USES STEEL \pm .005 \triangle C - OTHER FINISHES USE CRS \pm .004 - FOR EL & PE FINISHES, LACQUER BOTH SIDES	A) LEAF: .040 SEE BOX 1 \diamond 1 THICKNESS MATERIAL FINISH	B) PIN: .090 \pm .002 STEEL DIAMETER MATERIAL FINISH	TOLERANCES UNLESS NOTED: .X \pm .060 .XX \pm .030 .XXX \pm .015		*STANDARD DIE BURRS PERMISSIBLE* ANGLES \pm 2°		
	C) KNUCKLE LENGTH: 1/2"	D) MOVEMENT: FREE SWINGING/SMOOTH-ACTING	 Walkerton, Ontario NOG 2V0 (519) 881-1320		ITEM DESCRIPTION: CONTINUOUS HINGE		
	E) WIDTH: EQUAL * UNEQUAL ____	F) FINISH: AB/NP/FB/SB/EL/W2/B2/PE/ZP/NONE \triangle D			CUSTOMER REFERENCE:		
	G) CLEANED YES ____ NO *	H) ASSEMBLY STD. * REV. ____	J) PIN RETENTION: NON-REMOVABLE	DRAWN/REVISED BY: JMH		CATALOGUE # 1005	PART # 1119G04--