

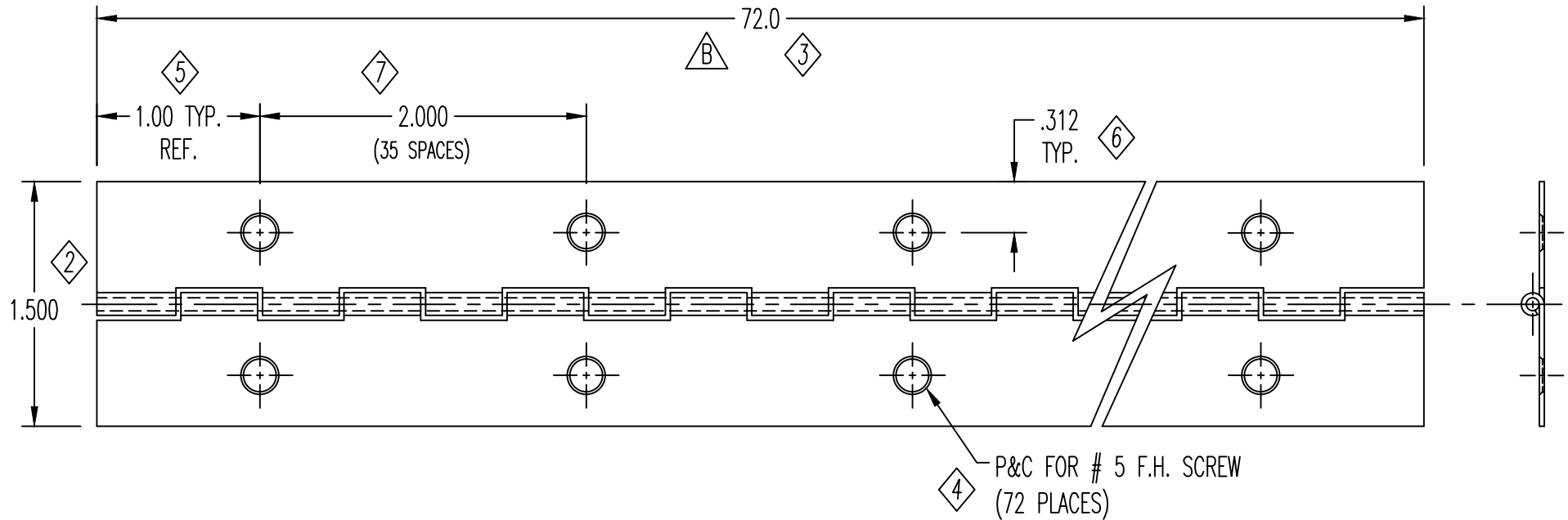
EV	DATE			CHANGE DESCRIPTION	CHG	CKD
	Y	M	D			
	91	10	22	RELEASED		
A	93	02	11	REDRAWN ON CAD		
B	97	02	13	72.0 WAS 72.00 / ADDED EL FINISH		
C	03	06	09	STEEL ±.005 WAS CRS ±.003		

Customer Approval

DATE: _____


APPROVED BY: _____

- ALL DIMENSIONS ARE IN INCHES
- DRAWINGS ARE NOT TO SCALE
- KNUCKLE PATTERN MAY VARY



SPECIAL OPERATIONS

- STAKED
- ZP USES STEEL ±.005 C
- OTHER FINISHES USE CRS ±.003
- FOR EL FINISH, LACQUER BOTH SIDES

A) LEAF: .030 THICKNESS SEE BOX I MATERIAL FINISH 1	B) PIN: .080 ±.002 STEEL DIAMETER MATERIAL FINISH	TOLERANCES UNLESS NOTED: .X ±.060 .XX ±.030 .XXX ±.015		*STANDARD DIE BURRS PERMISSIBLE* ANGLES ± 2°	
C) KNUCKLE LENGTH: 1/2"	D) MOVEMENT: FREE SWINGING/SMOOTH-ACTING	 LARSEN & SHAW Walkerton, Ontario NOG 2V0 (519) 881-1320		ITEM DESCRIPTION: CONTINUOUS HINGE	
E) WIDTH: EQUAL _____ * UNEQUAL _____	F) FINISH: B NONE/EL/ZP/NP/FB/SB			CUSTOMER REFERENCE:	
G) CLEANED YES _____ NO _____ *	H) ASSEMBLY STD. _____ * REV. _____	J) PIN RETENTION: NON-REMOVABLE		DRAWN/REVISED BY: JMH	
				CATALOGUE #	8000
				PART #	1122E01--
				REV	C