

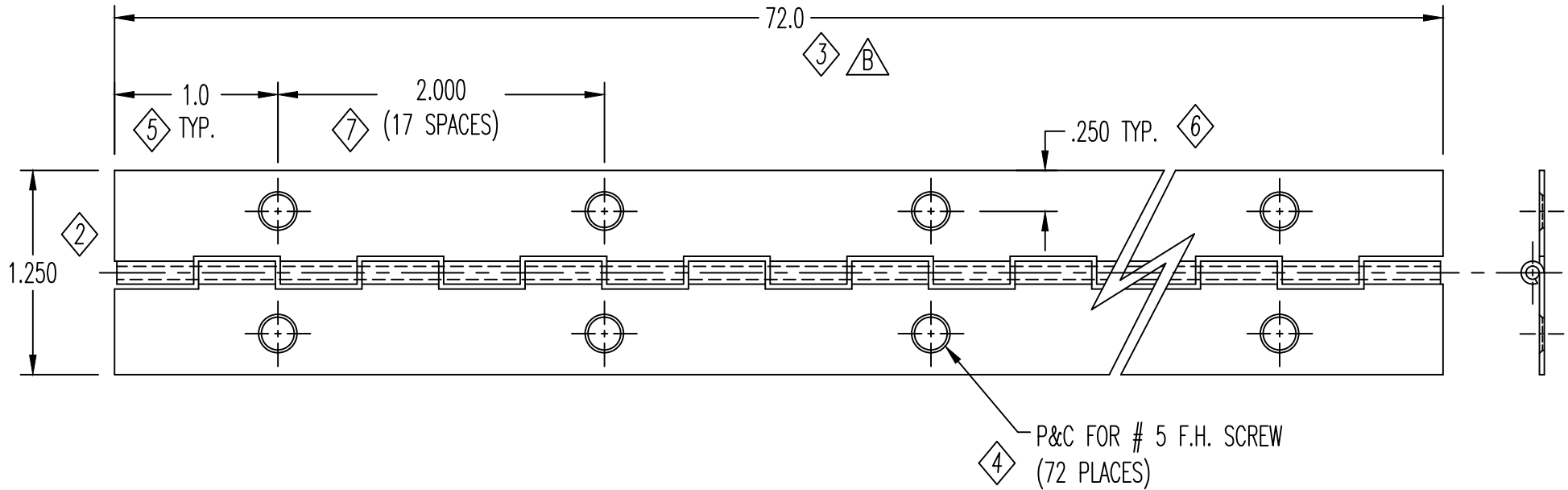
EV	DATE			CHANGE DESCRIPTION	CHG	CKD
	Y	M	D			
	92	02	18	RELEASED		
A	93	02	11	REDRAWN		
B	97	03	10	72.0 WAS 72.00 / ADDED APPROVAL BOX		
C	04	11	30	ADDED ELECTROBLACK & LACQUER FINISH		
D	07	03	30	ADDED BLACK NICKEL FINISH		

# Customer Approval

DATE: \_\_\_\_\_


APPROVED BY: \_\_\_\_\_

- ALL DIMENSIONS ARE IN INCHES
- DRAWINGS ARE NOT TO SCALE
- KNUCKLE PATTERN MAY VARY
- SPECIFICATIONS APPLY BEFORE FINISH



## SPECIAL OPERATIONS

- STAKED

A) LEAF: .030 ±.003 CRS THICKNESS MATERIAL FINISH	B) PIN: .080 ±.002 STEEL DIAMETER MATERIAL FINISH	TOLERANCES UNLESS NOTED: .X ±.060 .XX ±.030 .XXX ±.015		*STANDARD DIE BURRS PERMISSIBLE* ANGLES ± 2°	
C) KNUCKLE LENGTH: 1/2"	D) MOVEMENT: FREE SWINGING/SMOOTH-ACTING	 <b>LARSEN &amp; SHAW</b> Walkerton, Ontario NOG 2V0 (519) 881-1320		ITEM DESCRIPTION: CONTINUOUS HINGE	
E) WIDTH: EQUAL * UNEQUAL	F) FINISH: NB/EL/EB/ZP/NP/FB/SB/B3/PS			CUSTOMER REFERENCE:	
G) CLEANED YES ___ NO *	H) ASSEMBLY STD. * REV. ___	J) PIN RETENTION: NON-REMOVABLE		CATALOGUE # 8000	
		DRAWN/REVISED BY: JMH		PART # 1122D01--	
				REV D	