



# Kiaro Skin

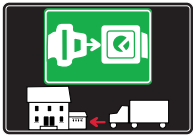
OPENING  
SYSTEMS  
FOR LIFT  
UP AND  
DROP  
DOWN  
DOORS





# SYMBOLS AND FINISHES LEGEND

## SYMBOLS



= SHELF SAFELY LOCKED DURING TRANSPORTATION AND AT HOME.



= ANTI-TURNOVER LOCKING SYSTEM



= NORMS / PATENTS



= PHILLIPS / POZIDRIV



= WITH BUFFER



= PART NO.



= BLADE SLOT



= WITH MAGNET



= PCS. PER PACKAGE



= COMBI SLOT



= NEWTON



= CAPACITY LOADING



= HEXALOBULAR SOCKET



= FRICTION



= WOOD / GLASS THICKNESS



= COUNTERSUNK HEAD



= AUTOMATIC



= HOLE DIAMETER



= PAN HEAD



= DROP DOWN



= DIAMETER



= FLANGE HEAD



= LENGTH



= FLAT HEAD



= STANDARD HINGE



= HEIGHT



= TRILOBULAR SCREW



= KIMANA HINGE



= RIGHT VERSION



= SELF-TAPPING SCREW



= FLAP HINGE



= LEFT VERSION



= EURO THREAD



= WITH SPRING



= SETTING CODE



= METRIC THREAD



= WITHOUT SPRING



= PCS. PER PAD



= PRE-INSERTED SCREW



= REVERSED SPRING



= CUT ON REQUEST



= PRE-INSERTED SCREW AND SPREADING BUSH



= WITH FLANGE



= SELF ADHESIVE

NOTE: Printing errors and omissions may exist despite our best efforts to ensure accuracy. We reserve the right to alter specifications without notice.

## MATERIALS

<b>ZA</b> = Zinc Alloy	<b>ST</b> = Steel	<b>HSS</b> = High Speed Steel	<b>BR</b> = Brass	<b>ABS</b> = Acrylonitrile Butadiene Styrene
<b>ZAnk</b> = Nickel-plated Zinc Alloy	<b>STzk</b> = Zinc-plated Steel	<b>AL</b> = Aluminium	<b>WD</b> = Wood	<b>EVA</b> = Ethylene Vinyl Acetate

<b>EP</b> = <b>ENGINEERING PLASTIC</b>	+ <b>EP</b> = other engineering plastic available on request	<b>SR</b> = <b>SOFT RUBBER</b>	+ <b>SR</b> = other soft rubber available on request
--	--	--------------------------------	--

<b>EPn</b> = Natural Engineering Plastic	<b>EPc</b> = Clear Engineering Plastic	<b>SRn</b> = Natural Soft Rubber
<b>EPw</b> = White Engineering Plastic	<b>EPg</b> = Grey Engineering Plastic	<b>SRw</b> = White Soft Rubber
<b>EPwg</b> = Water Green Engineering Plastic	<b>EPa</b> = Anthracite Engineering Plastic	<b>SRb</b> = Black Soft Rubber

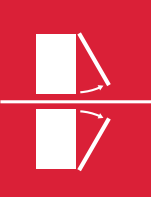


## FINISHES



+ **OTHER FINISHES AVAILABLE ON REQUEST**

PART NO.	FINISHES	PART NO.	FINISHES	PART NO.	FINISHES
00	Insignificant finish	IF	Middle Grey	RO	Red
AA	Natural	IJ	Light Grey	UT	T-Met 9007
AB	White	IL	Grey 20	UZ	T-Met
AE	White 9010	IN	Grey met. 26	WA	Bronzed
EA	Black	JB	Bright Aluminium	WI	Burnished
EC	Matt Black	JC	Aluminium - Chrome	XD	Satin-finished Steel
EE	Anthracite	JD	Matt Aluminium	YA	Nickel-plated
EW	Grey 9007	JE	Satin-finished Aluminium	YB	Bright Nickel-plated
FU	Gunmetal	JF	Aluminium - Brass	YC	Matt Nickel-plated
FV	Gunmetal V52	JG	Aluminium 5	YD	Satin-finished Nickel-plated
GR	Raw	JL	Aluminium PE 11	YQ	Black Nickel
HA	Brass-Plated	JM	Aluminium RAL 9006	Z9	Black Zinc
HH	Tropicalized	KA	Chrome	ZA	Zinc alloy
HL	Raw Brass	KB	Bright Chrome	ZN	Zinc-plated
HX	Graphite	KC	Matt Chrome	ZO	Bright Gold
IA	Grey	LD	Brown 8019	ZY	Titanium
IB	Metallic Grey	NN	Metallic Beige	ZZ	Clear



OPENING  
SYSTEMS FOR  
FLAP AND  
DROP DOWN  
DOORS

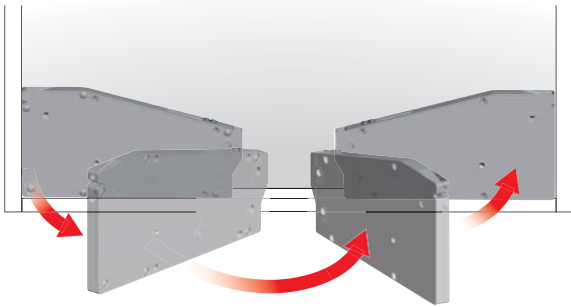
# KIARO SKIN

**ITALIANA**  
ferramenta

## KIARO SKIN

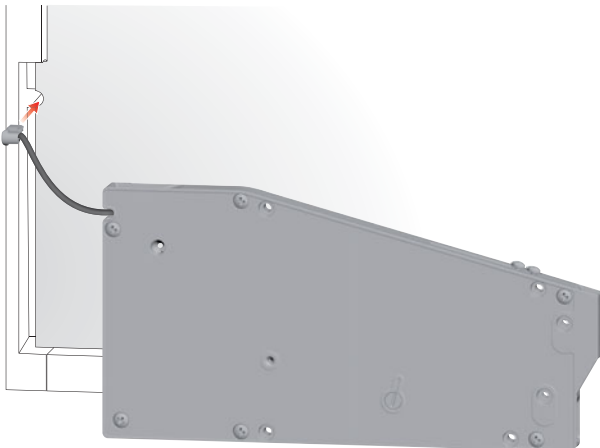


### UNHANDED MECHANISM

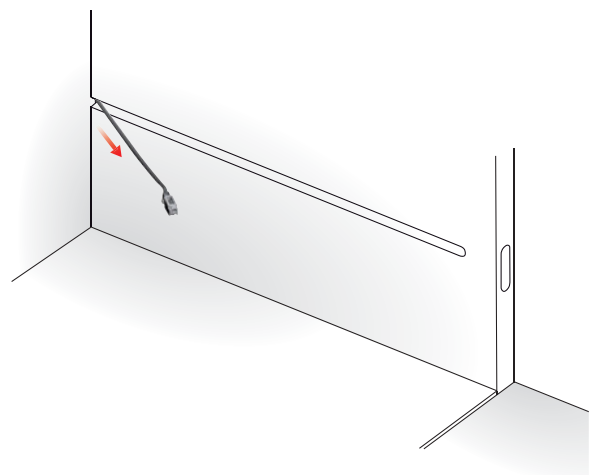


### MECHANISM INSTALLATION

#### STEP 1



#### STEP 2

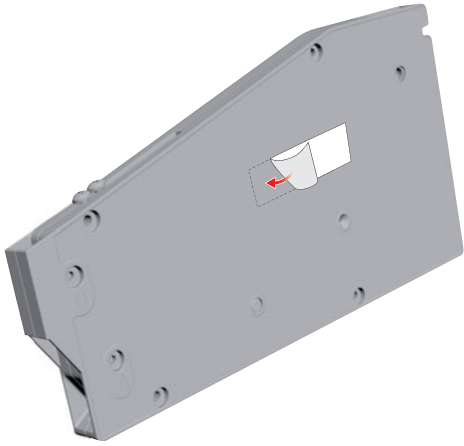




## MECHANISM FIXING

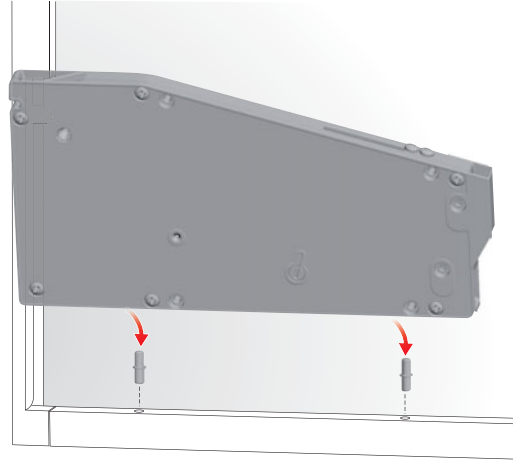
### STEP 1

Stick on the back of the mechanism a double-sided tape. (NOT INCLUDED)

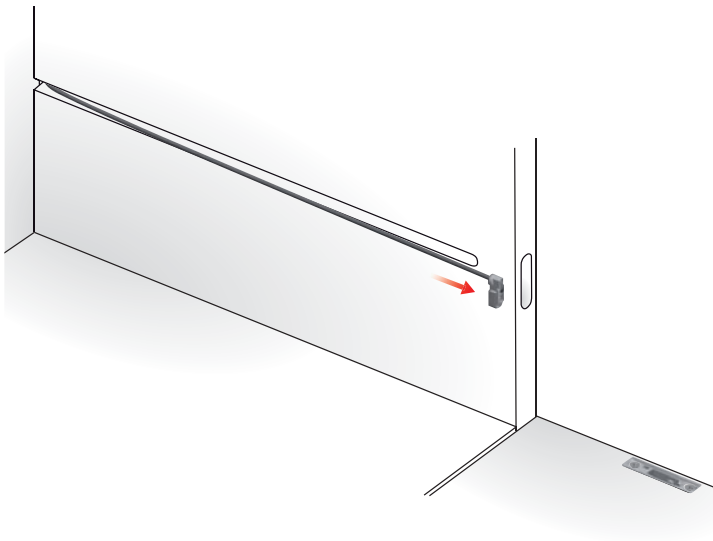


### STEP 2

Fix the mechanism onto the cabinet by using the provided pins.

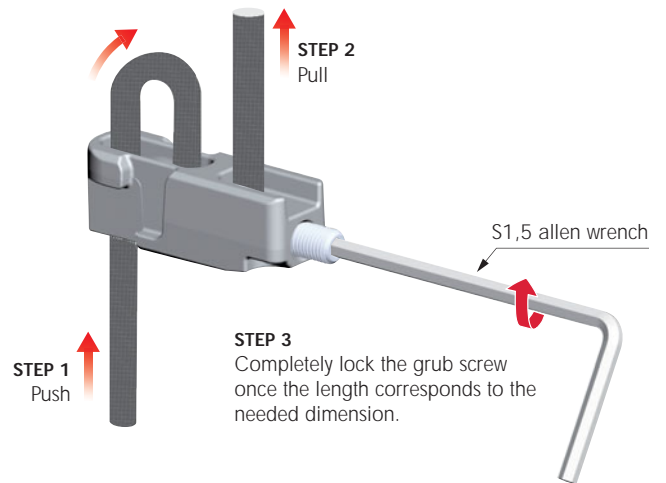


## WIRE CUTTING

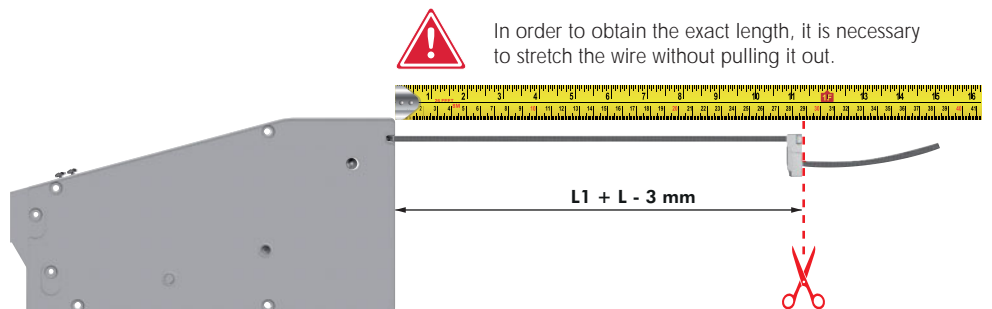
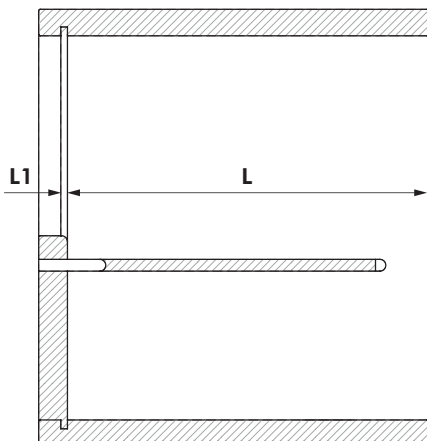


## INSTRUCTIONS FOR WIRE CUTTING

INSERTION OF THE WIRE INTO THE END PART AND LOCKING WITH M3 GRUB SCREW

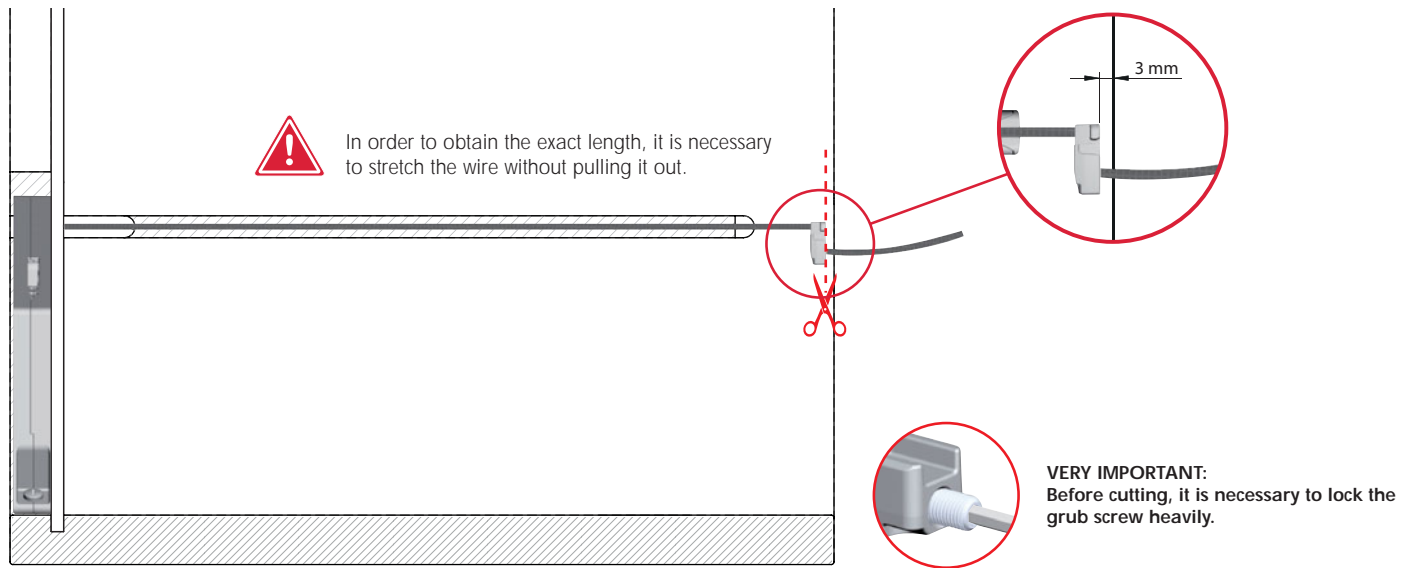


## WIRE CUTTING WITH UNMOUNTED MECHANISM

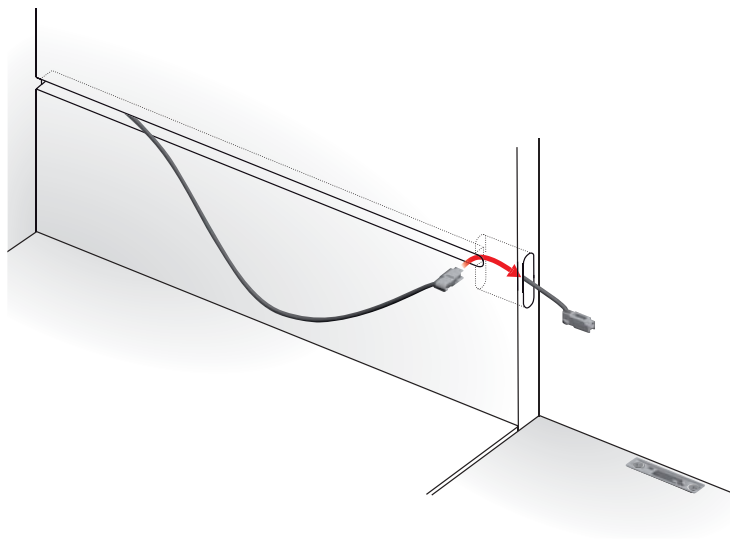


**VERY IMPORTANT:**  
Before cutting, it is necessary to lock the grub screw heavily.

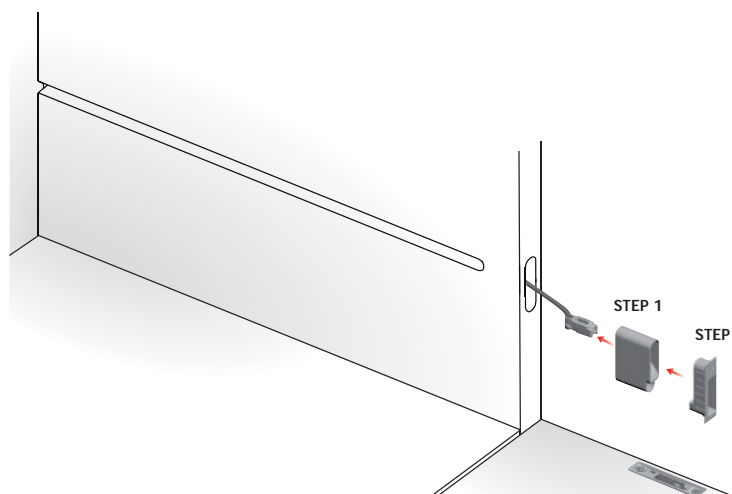
## WIRE CUTTING WITH MOUNTED MECHANISM




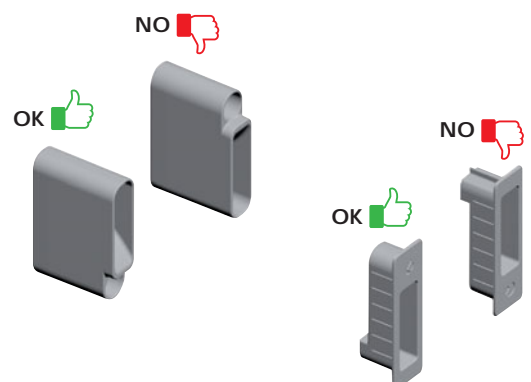
## WIRE INSERTION ON THE SIDE MILLING



## POSITIONING OF THE FRONTAL HOUSING INTO THE FRONT MILLING OF THE CABINET SIDE

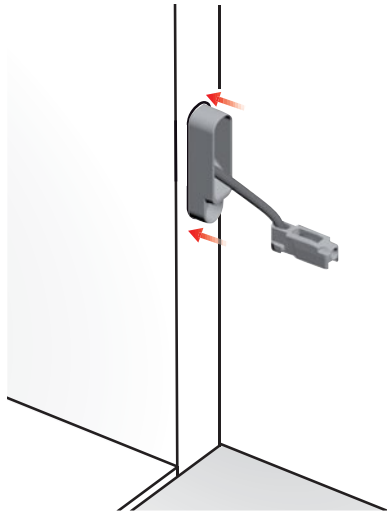


 Before positioning the frontal housing into the front milling of the cabinet side, it is recommended to verify its right direction.

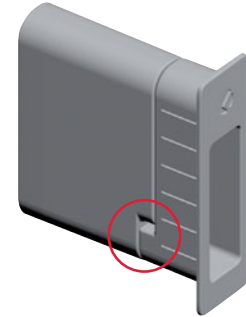
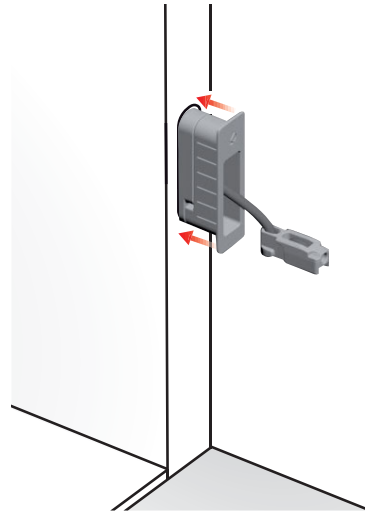




**STEP 1**  
Insert partially the frontal housing.

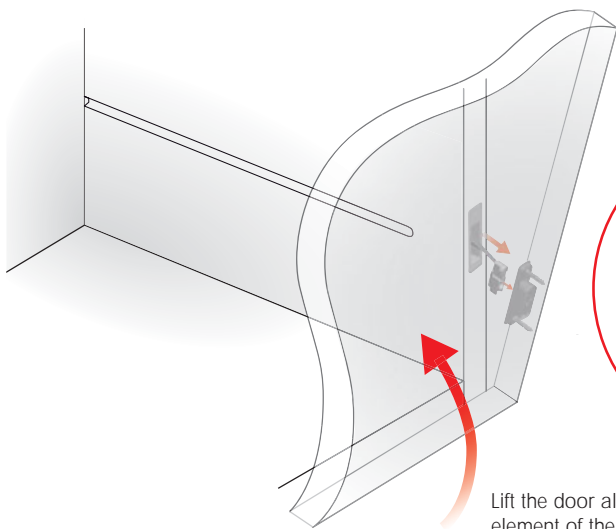


**STEP 2**  
Complete the insertion by using the cover of the frontal housing.



The recess of the two pieces makes the insertion into the front milling of the cabinet side easier.

### WIRE INSERTION ONTO THE DOOR BRACKET



Lift the door almost completely to slot the end element of the wire into the door bracket.

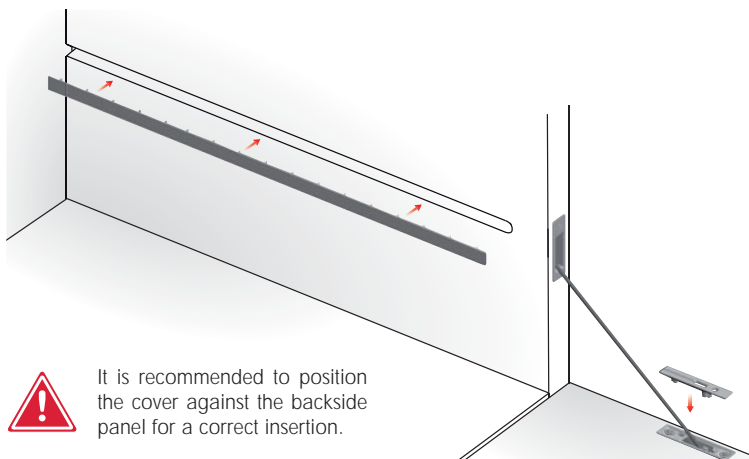
**STEP 1**

**STEP 2**

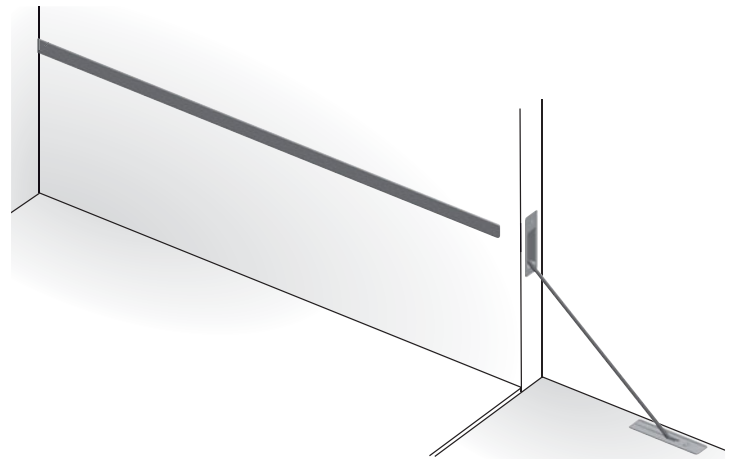


click

### COVER CAPS INSERTION

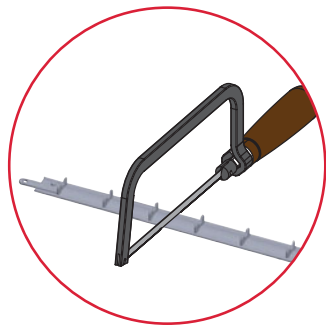


It is recommended to position the cover against the backside panel for a correct insertion.

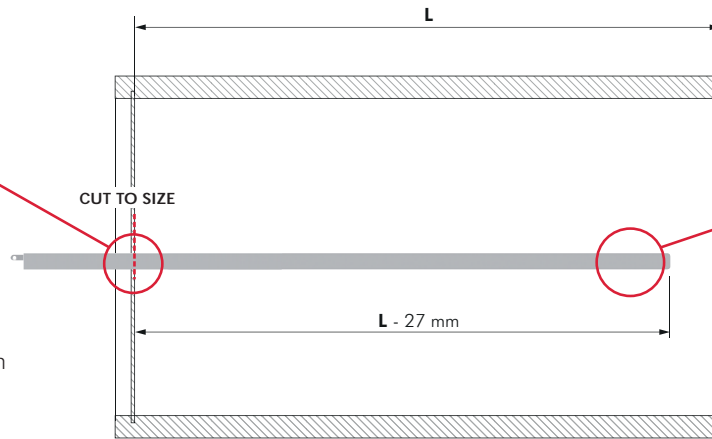


## RULES FOR SIDE COVER CUT TO SIZE

### SIDE COVER CUT TO SIZE



It is recommended to use an hacksaw to cut the cover.

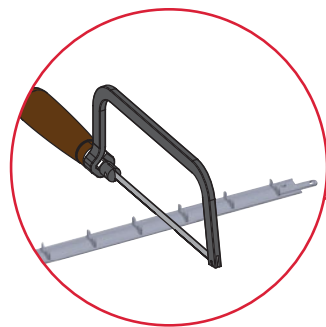


Pay attention to the arrow on the backside of the cover before to cut it. The arrow specify the external side of the cabinet.

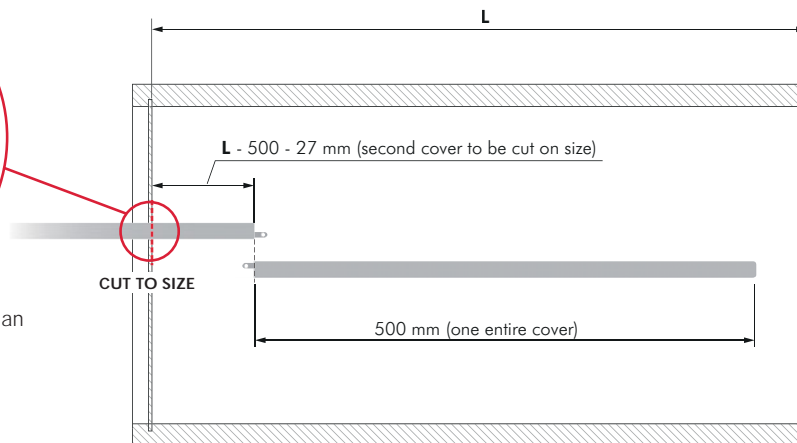
### SIDE COVER CUT TO SIZE FOR CABINET INTERNAL SPACE (L) > 527 mm



It is necessary to order 2 covers.

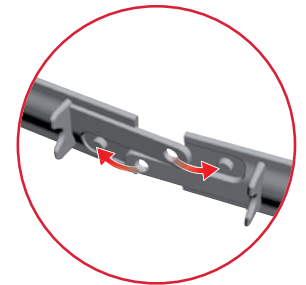


It is recommended to use an hacksaw to cut the cover.



### COVERS JUNCTION

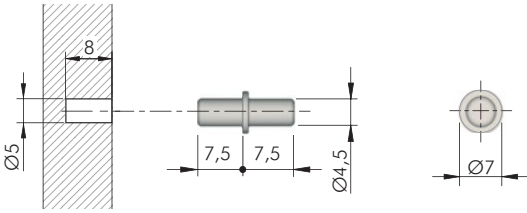
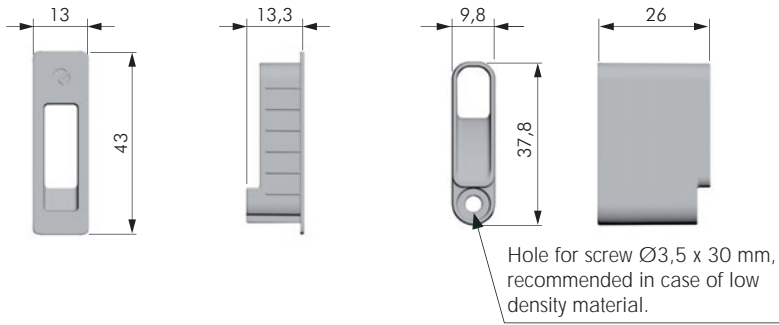
Make the junction before to apply the cover on the cabinet.



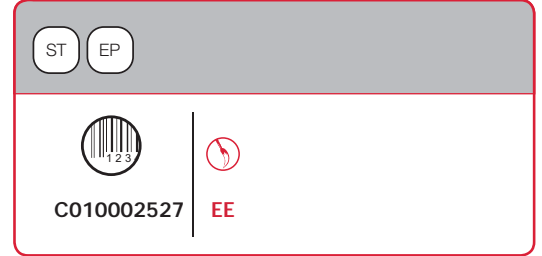
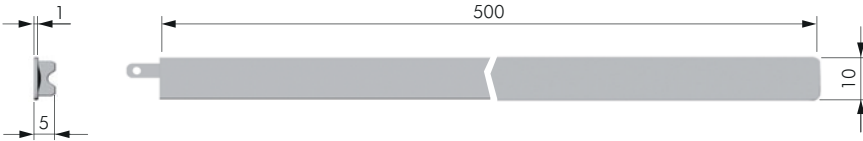




**KIARO SKIN SIDE SUPPORTS**



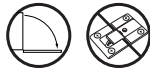
**KIARO SKIN SIDE COVER**



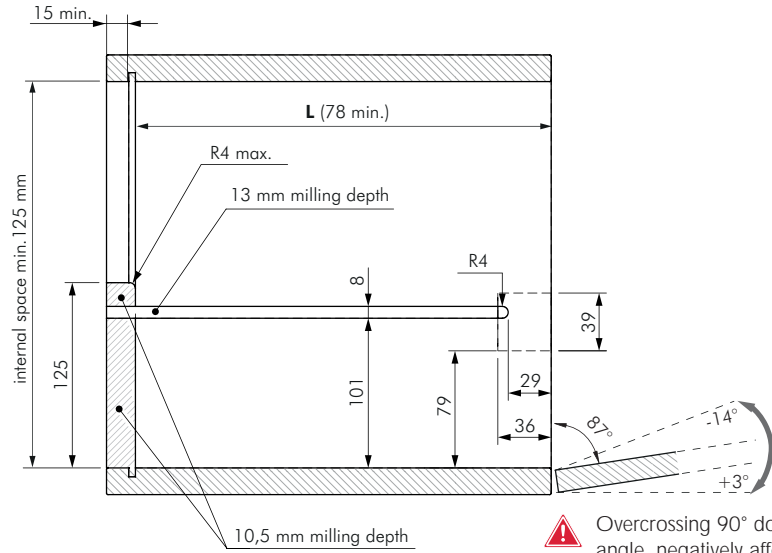
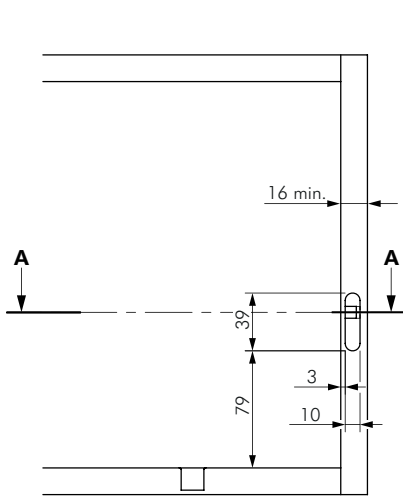
NOTE: the set includes all the components shown in the picture.



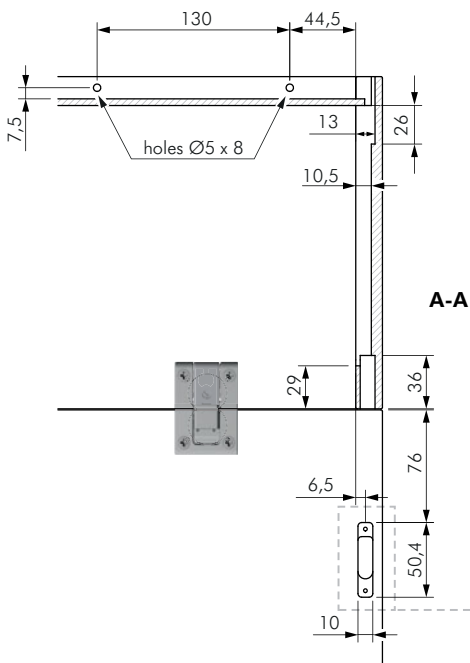
## KIARO SKIN WITH KIMANA HINGE



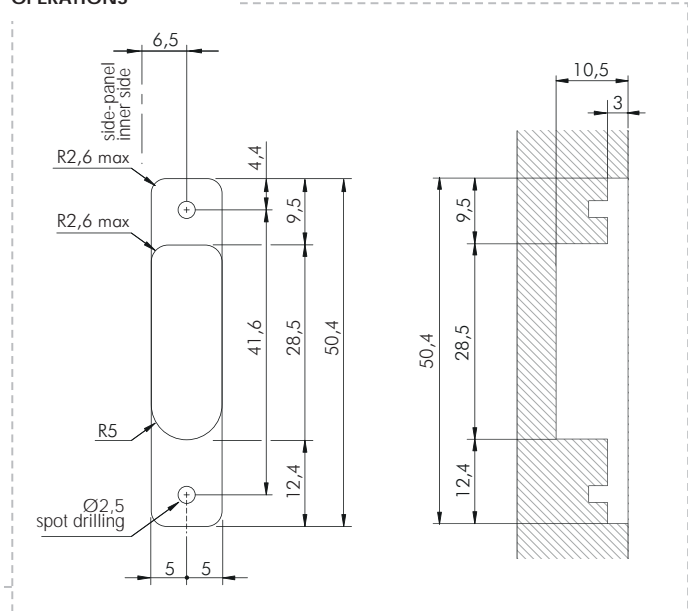
### SIDE-PANEL DRILLING OPERATIONS



**⚠** Overcrossing 90° door opening angle, negatively affects the Kimana hinges.

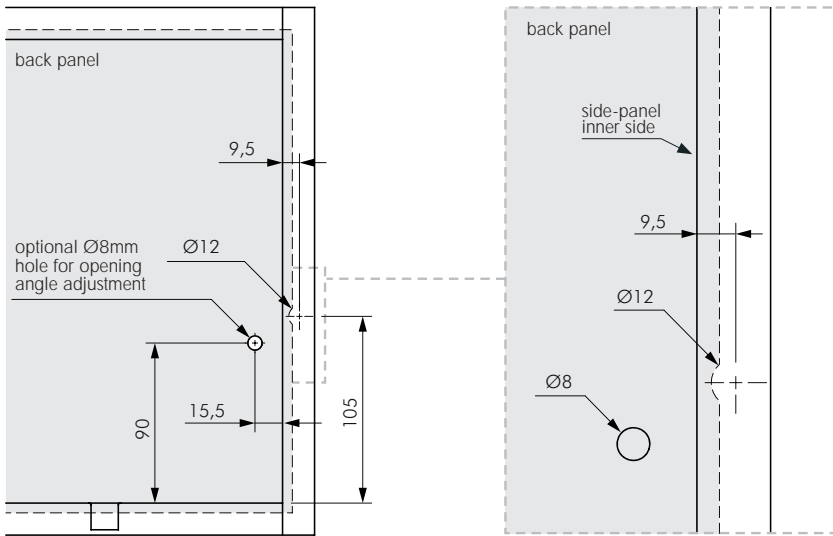


### DOOR PANEL DRILLING OPERATIONS





## BACK-PANEL DRILLING OPERATIONS

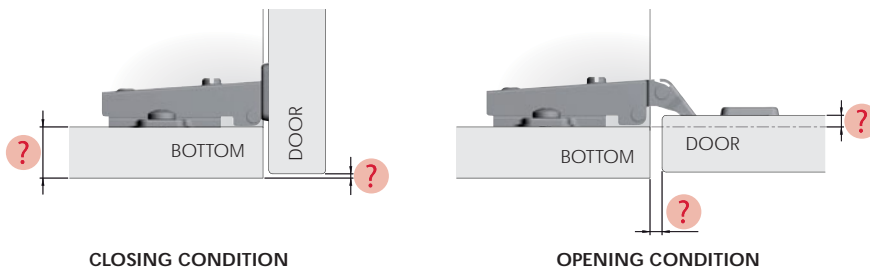


In case of door without handles it is recommended to use **K Push Tech with buffer**.

## KIARO SKIN WITH STANDARD UNSPRUNG HINGES



In case the hinges to be installed are not KIMANA hinges, please contact our technical department to receive the correct drilling plan. It is necessary to indicate all the values requested in the following diagram:





# Kiaro Fox

OPENING  
SYSTEMS  
FOR LIFT  
UP AND  
DROP  
DOWN  
DOORS



## KIARO FOX

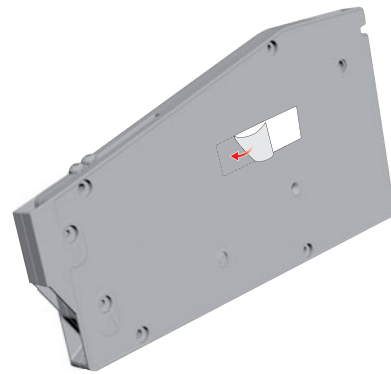


### SIDE BRACKET FIXING

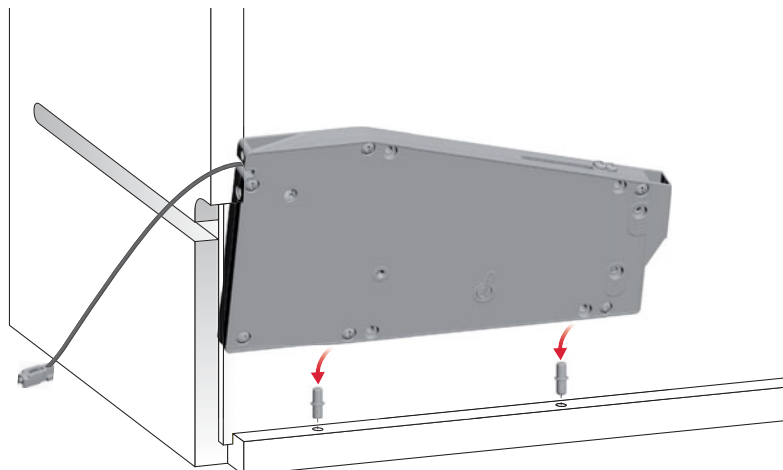


### MECHANISM FIXING

**STEP 1** - Stick on the back of the mechanism a double-sided tape. (NOT INCLUDED)

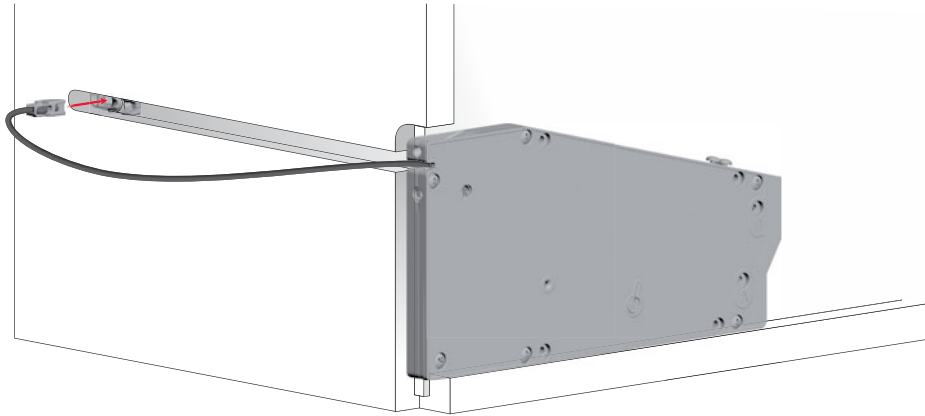


**STEP 2** - Fix the mechanism onto the cabinet by using the provided pins.

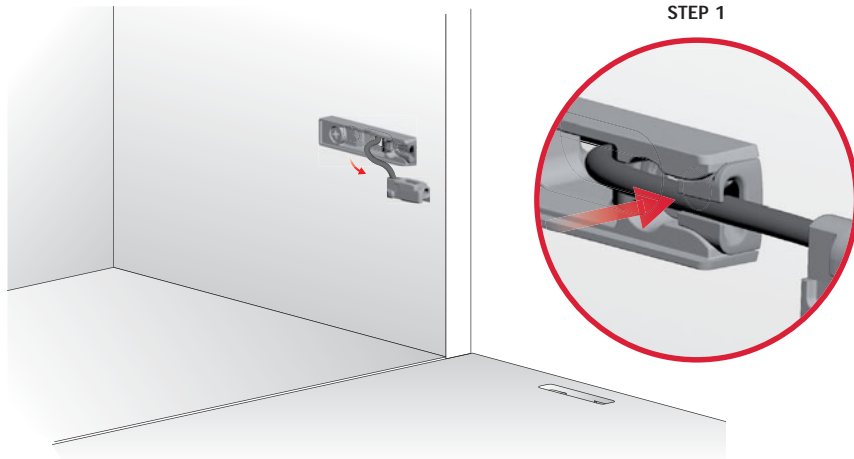




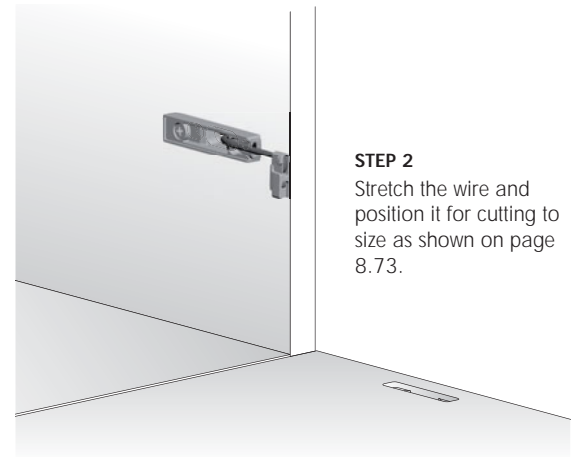
Insert the cable into the side bracket from the outside of the side panel.



### WIRE INSERTING INTO THE SIDE BRACKET

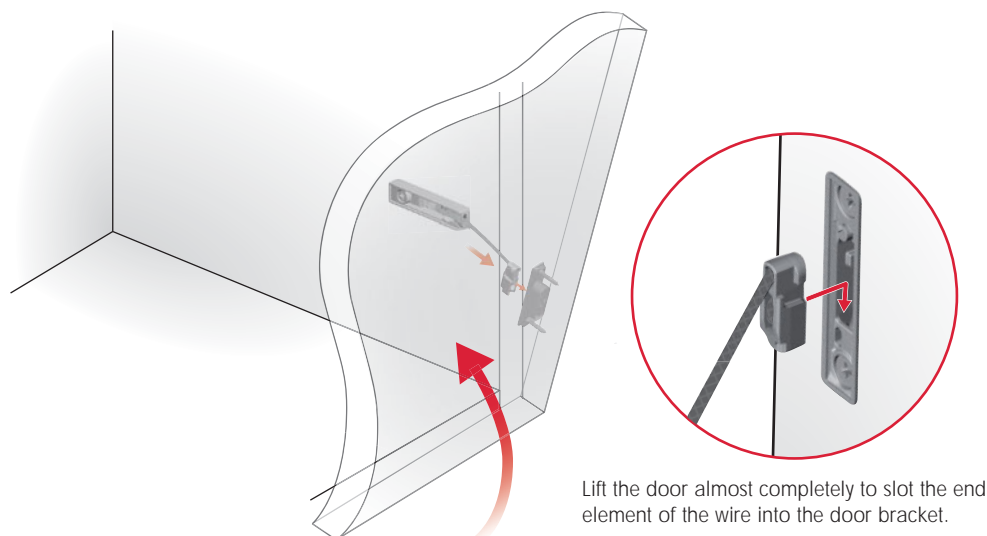


### WIRE CUTTING



**STEP 2**  
Stretch the wire and position it for cutting to size as shown on page 8.73.

### WIRE INSERTION ONTO THE DOOR BRACKET



### STEP 1

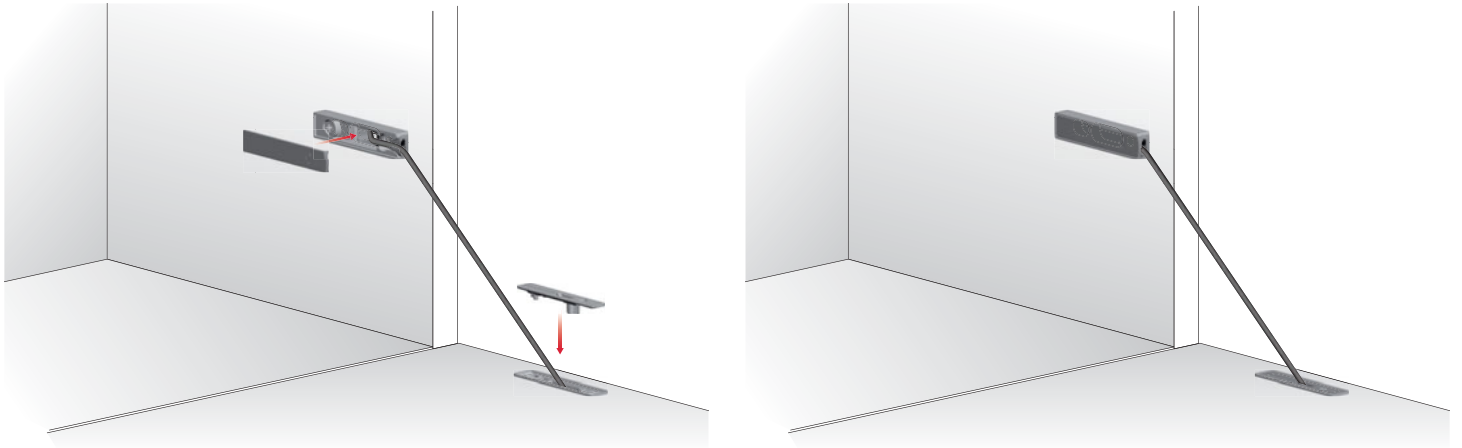


### STEP 2



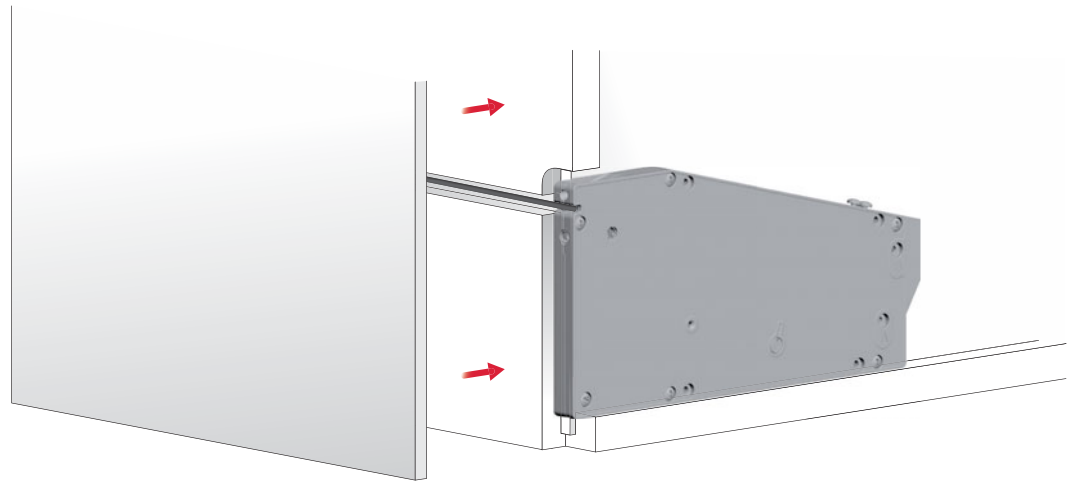
click

## COVER CAPS INSERTION

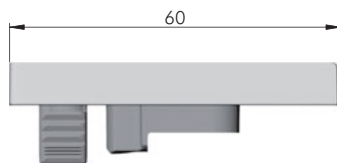
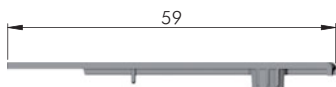


## INSTALLATION ENDING

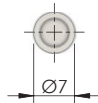
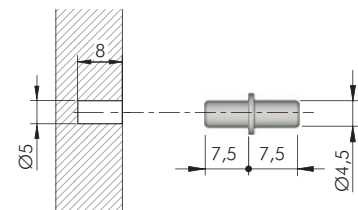
Mount the additional cover panel onto the side panel.



## KIARO FOX SET



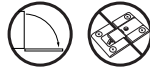
	= Ø 5 mm
EP	= 12 pcs.
C010002577	YA
C010002578	YQ



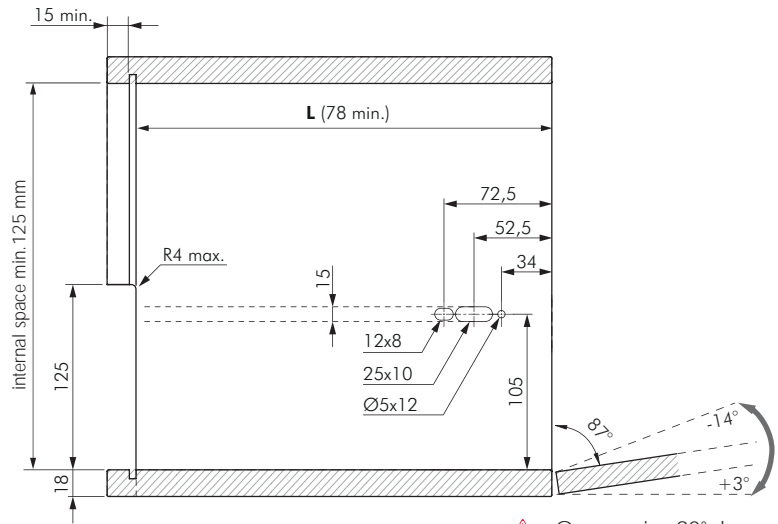
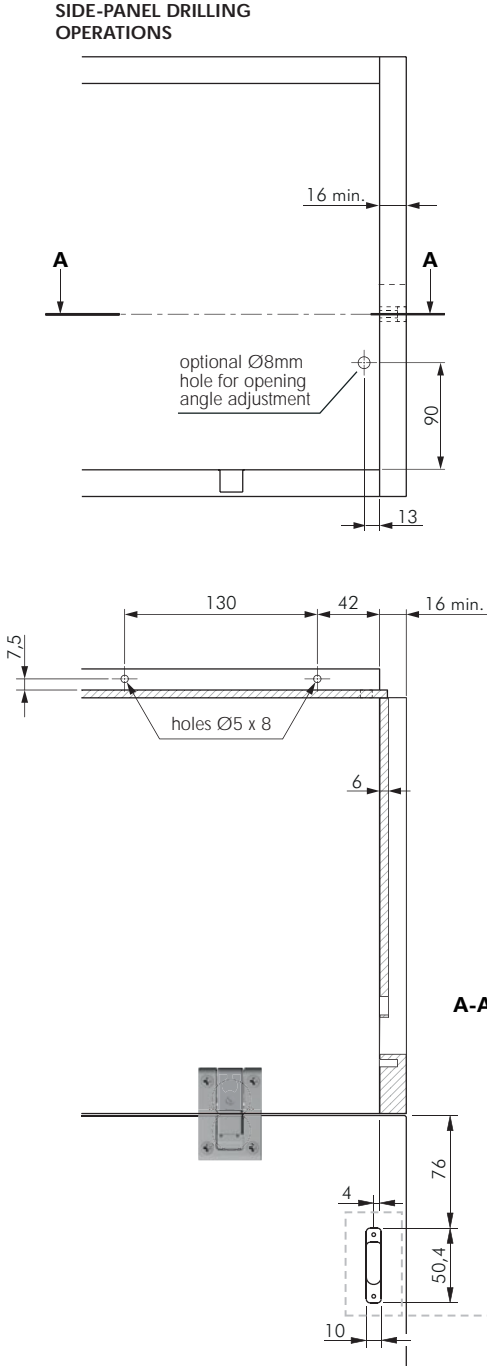
NOTE: The set includes the double-sided tape needed for the mechanism fixing onto the backside panel.



## KIARO FOX WITH KIMANA HINGE

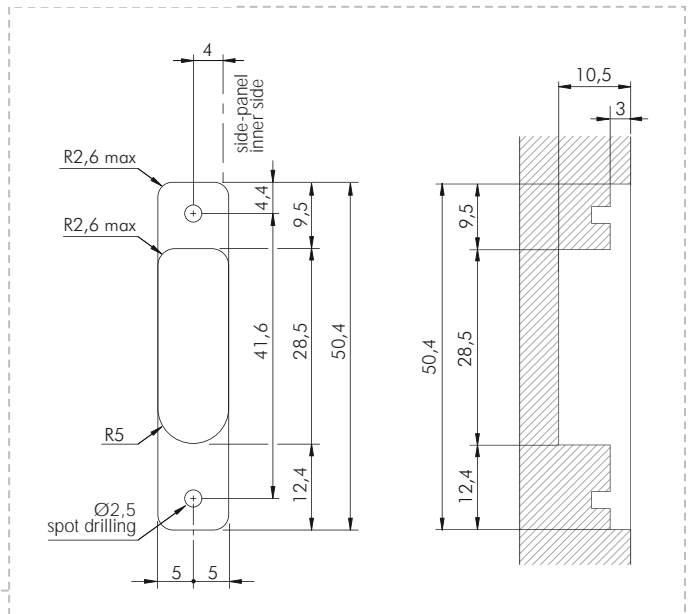


### SIDE-PANEL DRILLING OPERATIONS



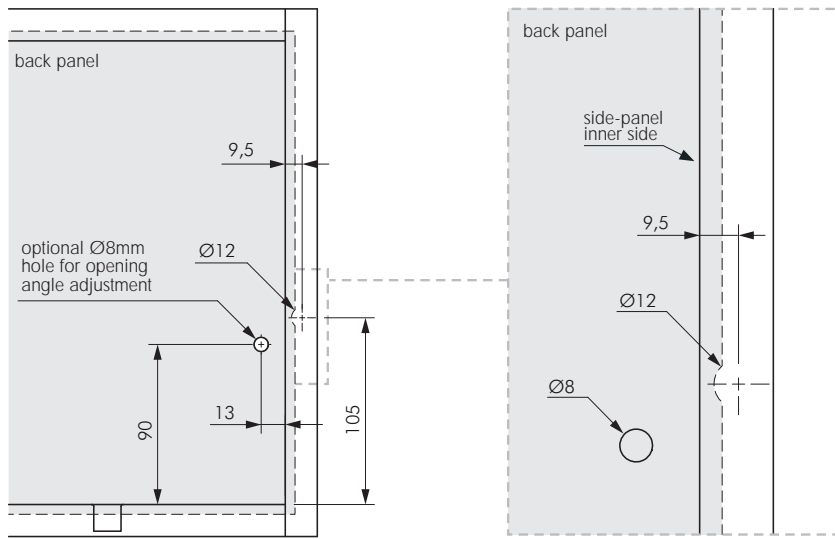
**!** Overcrossing 90° door opening angle, negatively affects the Kimana hinges.

### DOOR PANEL DRILLING OPERATIONS





## BACK-PANEL DRILLING OPERATIONS

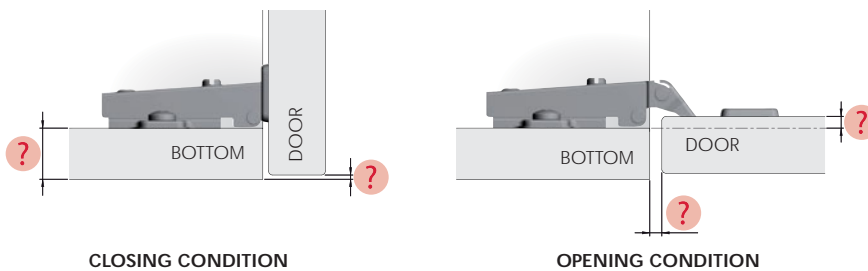


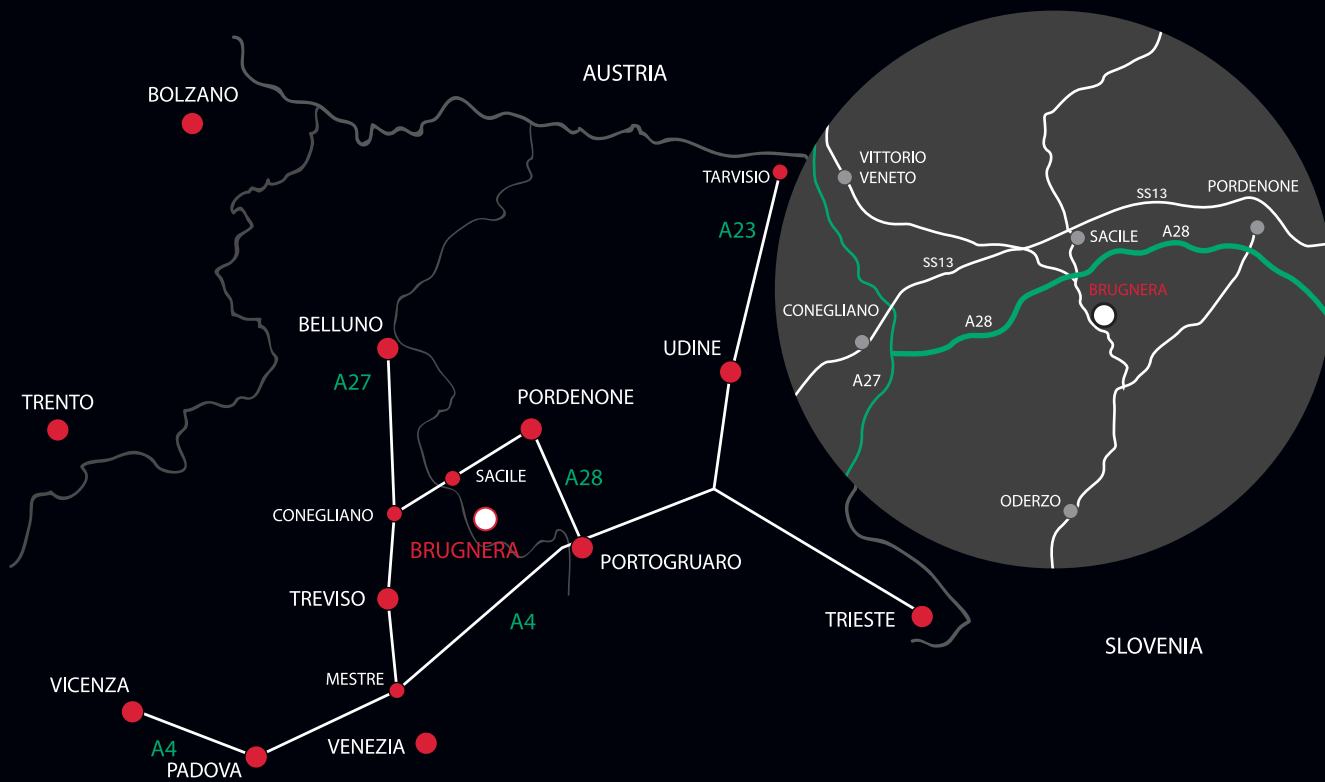
In case of door without handles it is recommended to use **K Push Tech with buffer**.

## KIARO FOX WITH STANDARD UNSPRUNG HINGES



In case the hinges to be installed are not KIMANA hinges, please contact our technical department to receive the correct drilling plan. It is necessary to indicate all the values requested in the following diagram:





[www.italianaferramenta.it](http://www.italianaferramenta.it)