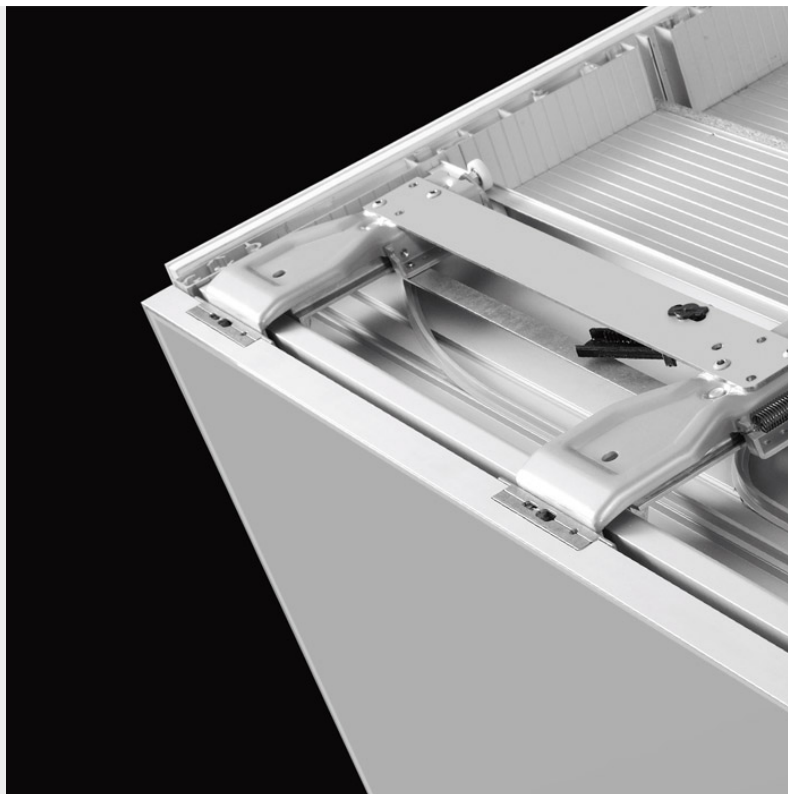


sliding systems coplanar

slider520

Coplanar movement - wall cabinet



Coplanar sliding system for two-door wall units up to a weight of 20kg, decelerated opening and closing.

- Coplanar two-door mechanism.
- Decelerated opening and closing.
- Maximum door load: 20kg.
- Door width: minimum 600mm, maximum 1,500mm.
- Maximum door height: 1,200mm.
- Door thickness: minimum 18mm.
- Maximum thickness of the door with handle: 45mm.
- Vertical door adjustment: ± 4.5 mm.
- Horizontal door adjustment: ± 3 mm.
- Upper load-bearing track fitted to the top panel of the wall unit.
- Lower track recessed into the base panel of the wall unit.

Motorised version also available



ARTURO SALICE S.p.A. (Società con Unico Socio)

VIA PROVINCIALE NOVEDRATESE, 10
22060 NOVEDRATE (COMO) ITALIA
TEL. 031 790424
FAX 031 791508
info.salice@salice.com

www.salice.com
CAPITALE SOC. € 25.000.000 I.V.
C.F. e P. IVA 00211650130
REG. IMPRESE COMO 00211650130
REA COMO N°96189

DEUTSCHE SALICE GmbH
74382 NECKARWESTHEIM
www.deutschesalice.de

SALICE UK Ltd.
HUNTINGDON CAMBS PE29 6FN
www.saliceuk.co.uk

SALICE FRANCE S.A.R.L.
06600 ANTIBES
www.salicefrance.com

SALICE CANADA Inc.
MISSISSAUGA, ONTARIO L5L 5Y1
www.salicecanada.com

SALICE AMERICA Inc.
CHARLOTTE NC 28227
www.saliceamerica.com

SALICE ESPAÑA, S.L.U.
08403 GRANOLLERS
www.saliceespana.es