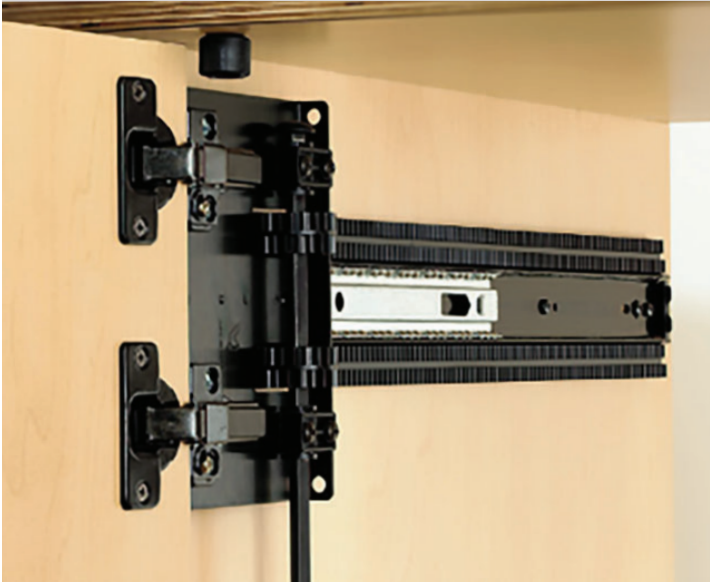


KV Pocket Door

Product Features



KV 8091 and 8071 series pocket doors are perfectly suited to various applications including entertainment centres, home theatres, breakfast bars, coffee stations, and home offices. Designed to accommodate any traditional or modern space requiring a pocket door system, they allow for designer-specified door fronts to conceal cabinetry when closed and pivot approximately 105 degrees using Salice hinges. This feature enables the front to slide smoothly back into the cabinet's pocket, ensuring unobstructed access to the contents within.

8091 System

- Maximum door dimensions 72" (H) x 26" (W)
- Lengths: 12", 13", 14", 15", 16", 18", 20", 22", 24", 26", 28", 30"
- Load capacity: 75lbs (34kg)

8071 System

- Maximum door dimensions 42" (H) x 24" (W)
- Lengths: 12", 14", 16", 18", 20", 22", 24"
- Load capacity: 30lbs (13.6kg)

Recommended: 105 degree Salice hinge (sold separately)

What's In the Box

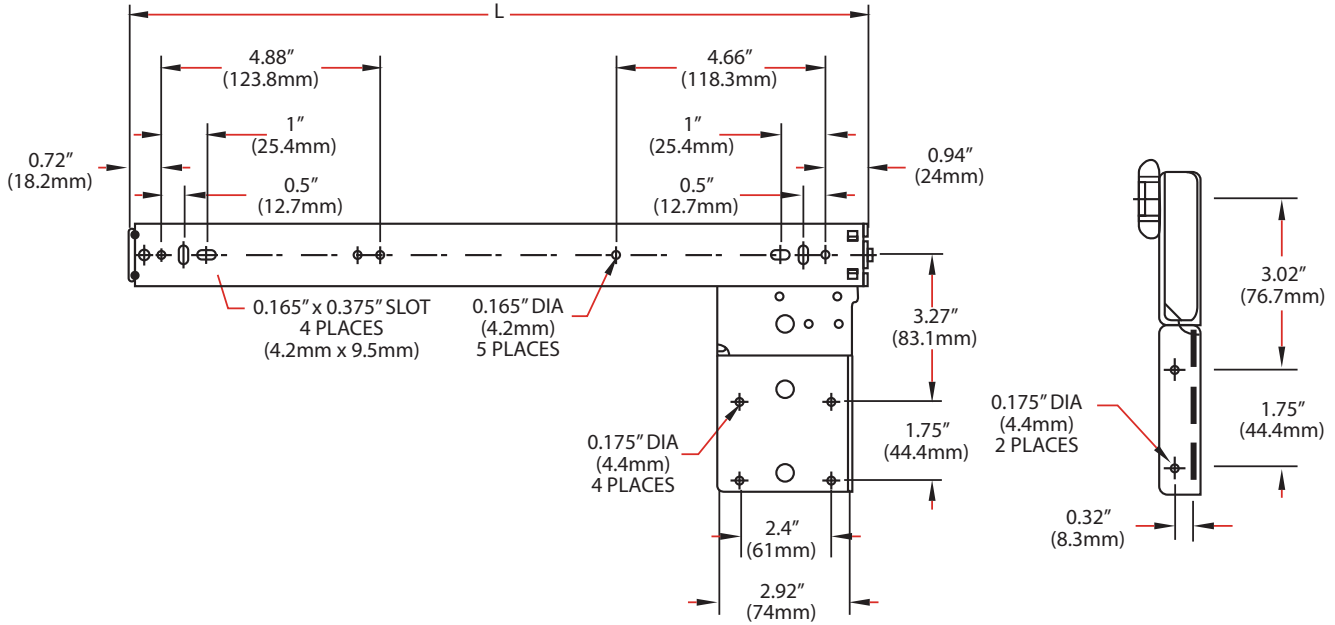
- Slides (1 pair)
- Screws



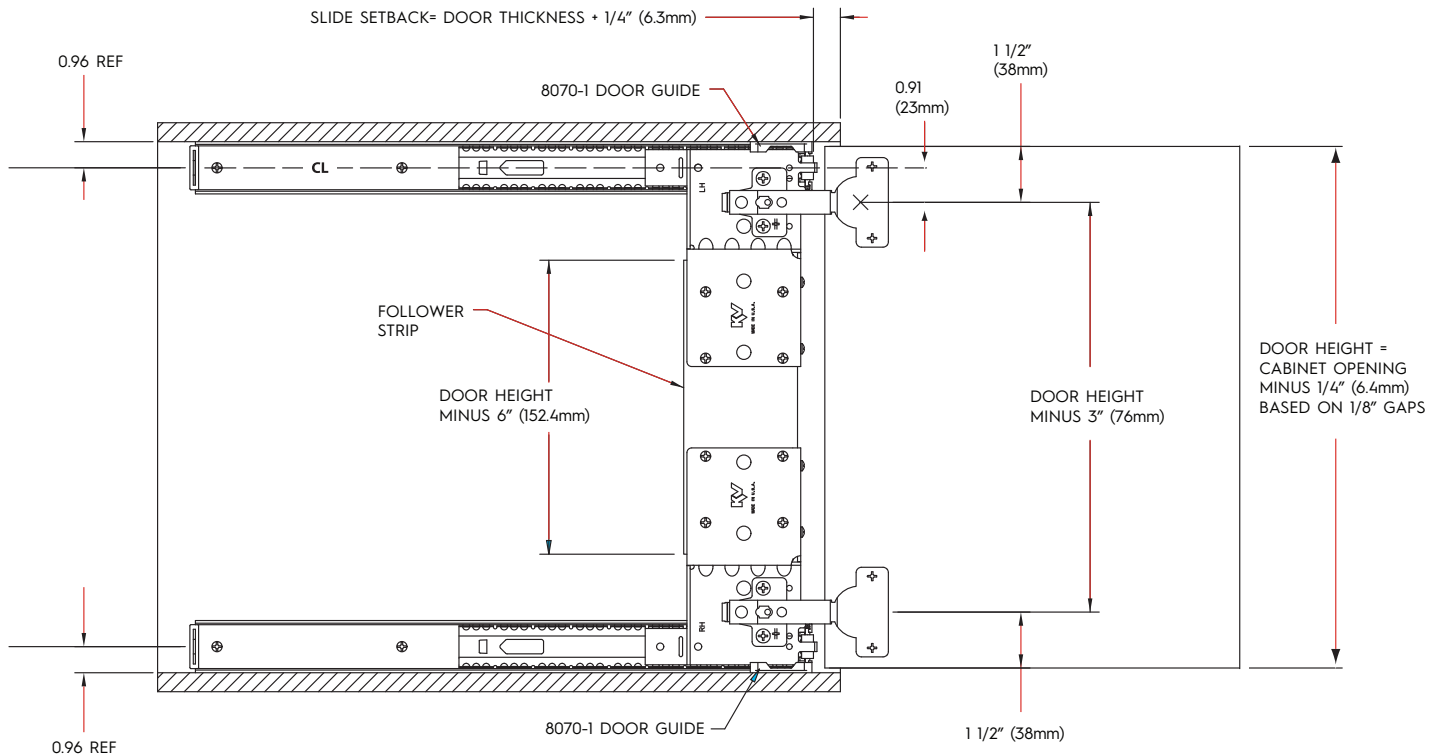
Size	8071 Series Part#	8091 Series Part#
12"	K8071PEZ-EB-12	K8091SP-EB-12
13"	--	K8091SP-EB-13
14"	K8071PEZ-EB-14	K8091SP-EB-14
15"	--	K8091SP-EB-15
16"	K8071PEZ-EB-16	K8091SP-EB-16
18"	K8071PEZ-EB-18	K8091SP-EB-18
20"	K8071PEZ-EB-20	K8091SP-EB-20
22"	K8071PEZ-EB-22	K8091SP-EB-22
24"	K8071PEZ-EB-24	K8091SP-EB-24
26"	--	K8091SP-EB-26
28"	--	K8091SP-EB-28
30"	--	K8091SP-EB-30



8071 Installation Dimensions



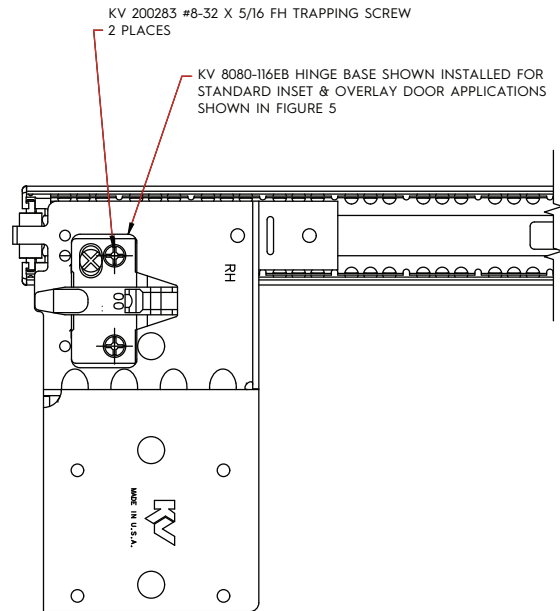
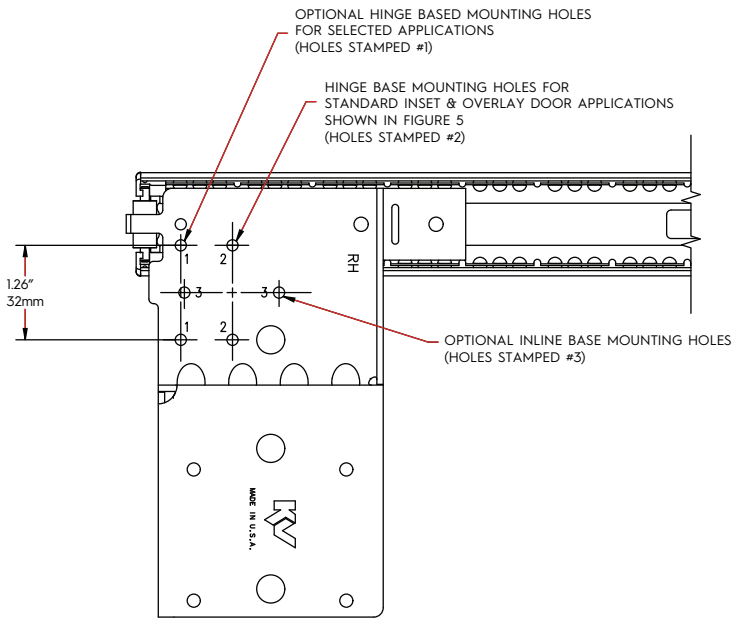
Step #1



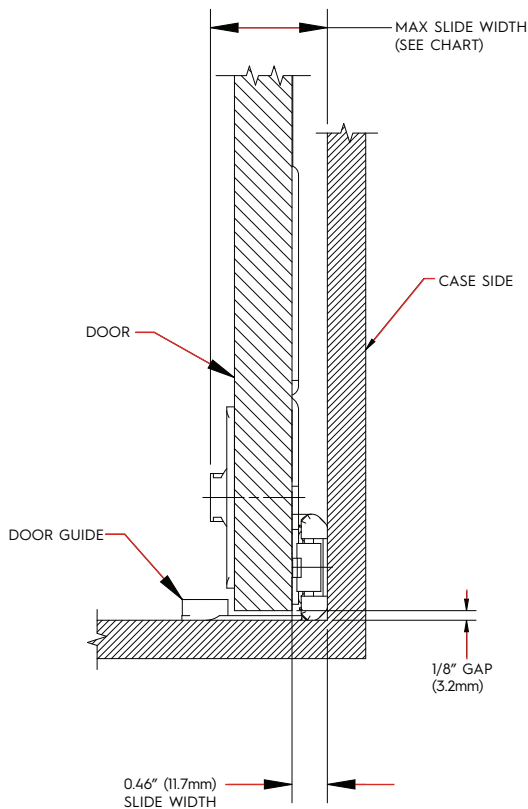


Step #2

Step #3



Step #4



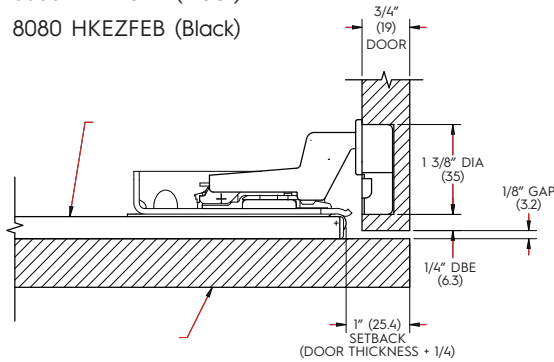


Step #5 - Frameless Applications

Standard or Free Swing Inset

Frameless, inset applications with 3/4" thick door.

- 8080 HKEZSEB (Black)
- 8080 HKEZFEB (Black)

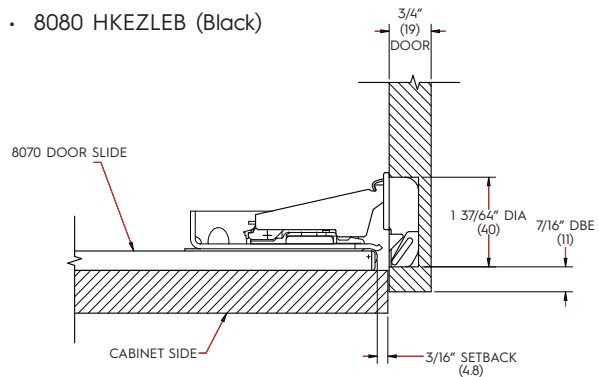


Partial Overlay

Frameless applications with 3/4" thick door.

Maximum overlay with full hinge adjustment is 13/32".

- 8080 HKEZLEB (Black)

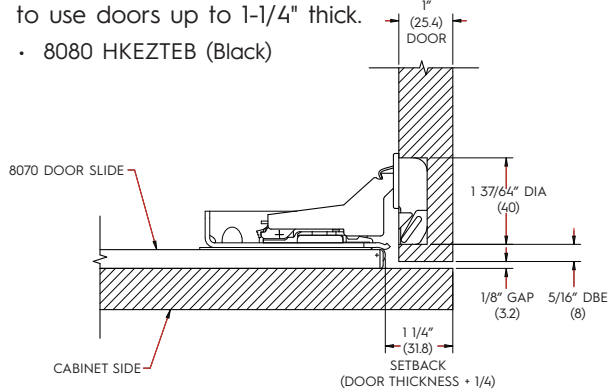


Thick Inset

Frameless, inset applications with 1" thick door.

Rear corner of door may be beveled at 45 degrees to use doors up to 1-1/4" thick.

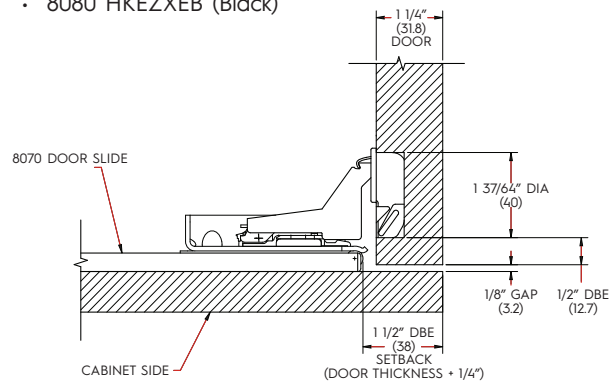
- 8080 HKEZTEB (Black)



Extra-Thick Inset

Frameless applications with 1-1/4" thick door.

- 8080 HKEZXEB (Black)

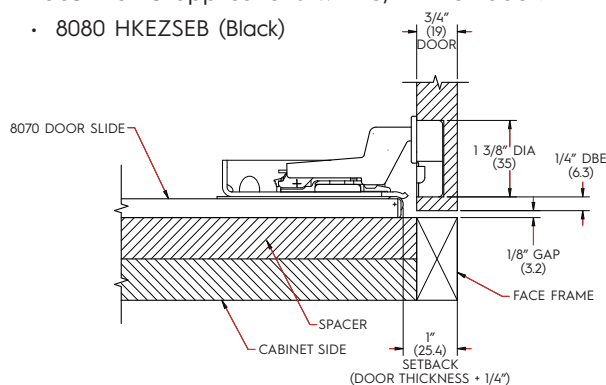


Step #5 - Face-Frame Applications

Standard Inset

Face-Frame applications with 3/4" thick door.

- 8080 HKEZSEB (Black)

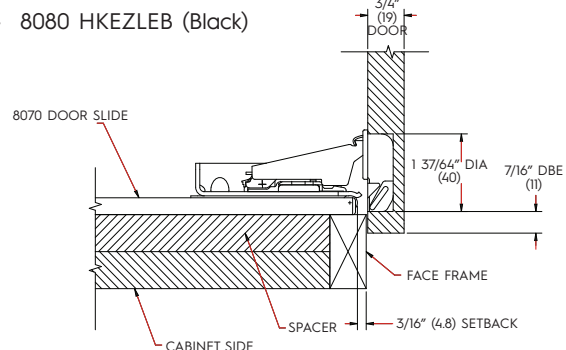


Partial Overlay

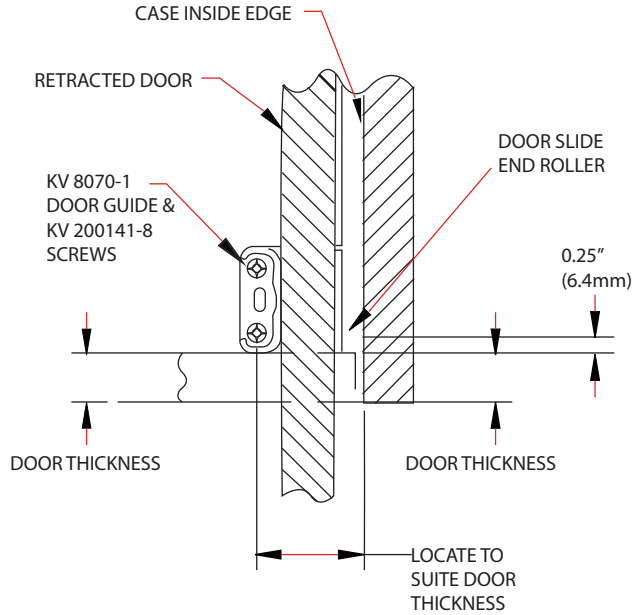
Face-Frame applications with 3/4" thick door.

Maximum overlay with full hinge adjustment is 13/32".

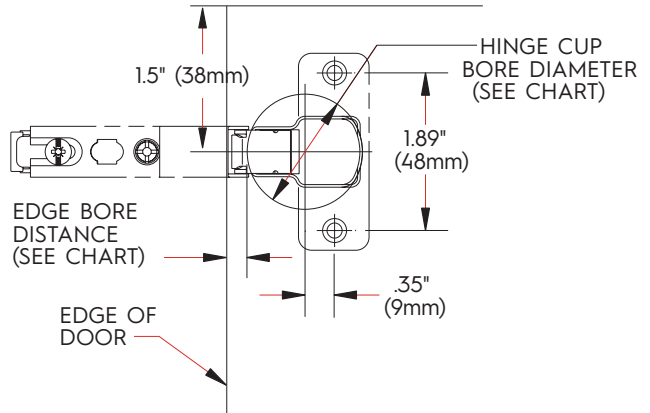
- 8080 HKEZLEB (Black)



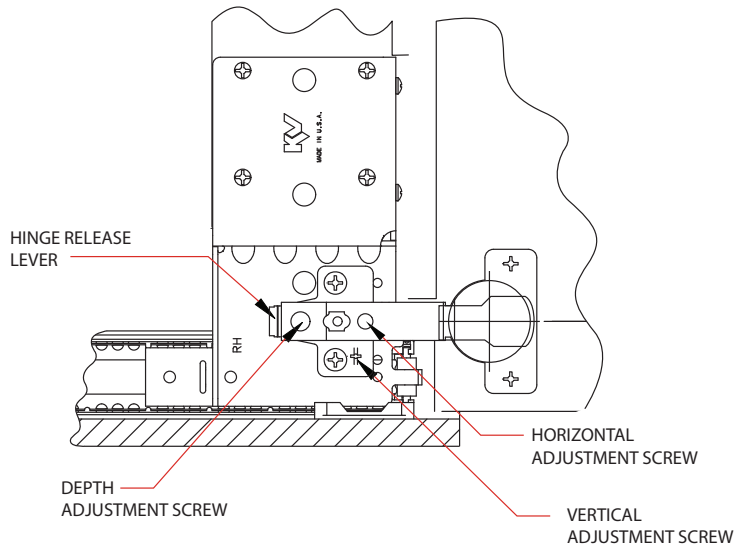
Step #6



Step #7

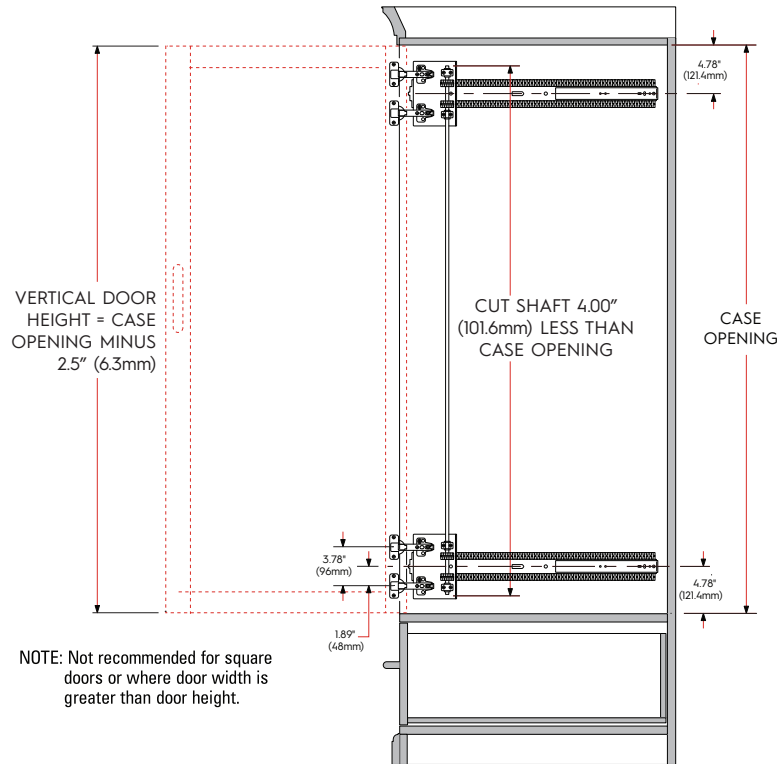


Step #8



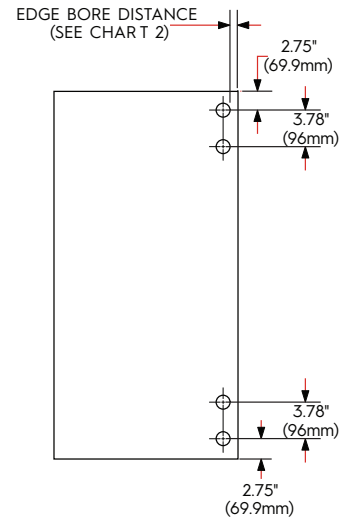


8091 Installation Step #1

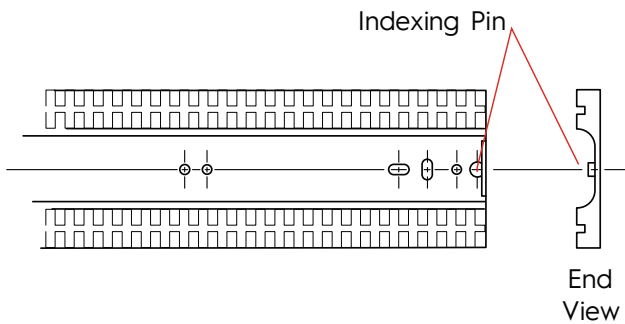


Step #2

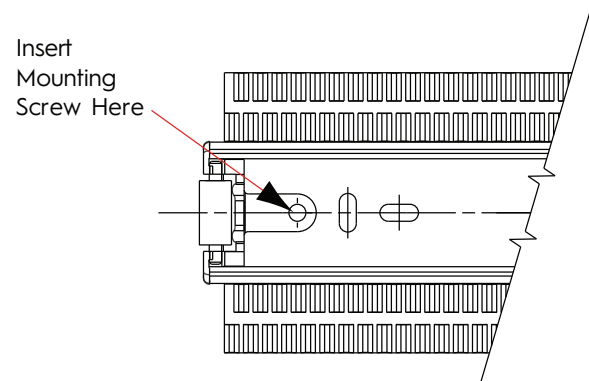
DOOR PREPARATION



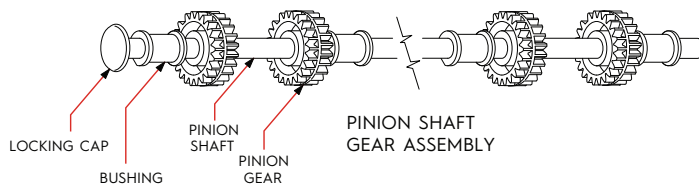
Step #3



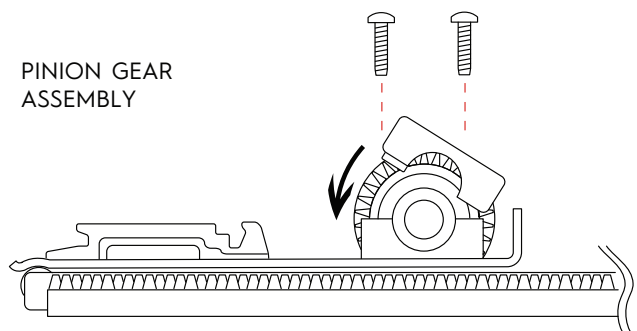
Step #4



Step #5

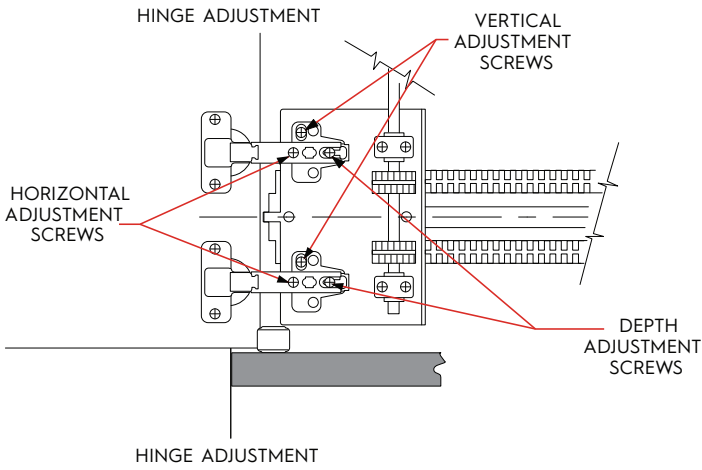


Step #6

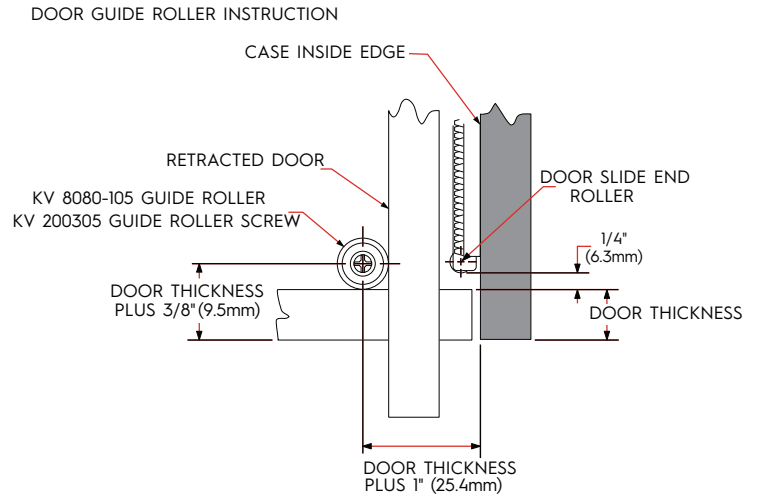




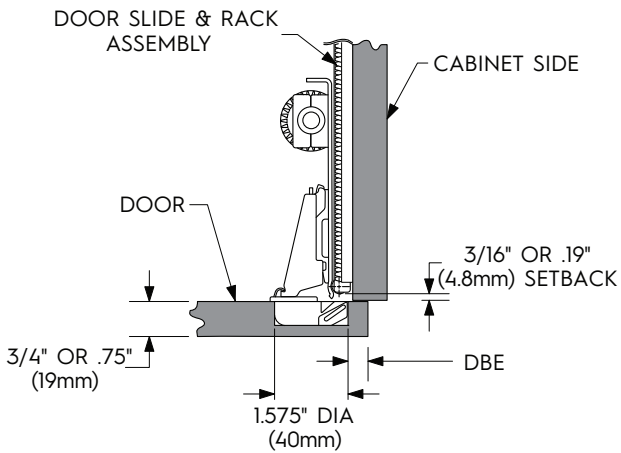
Step #7



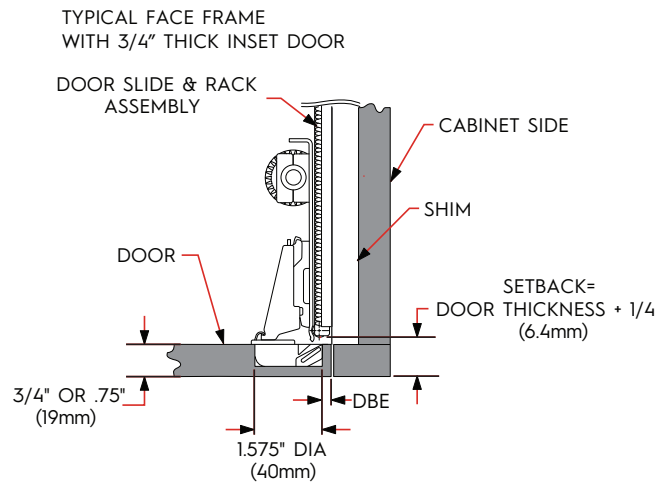
Step #8



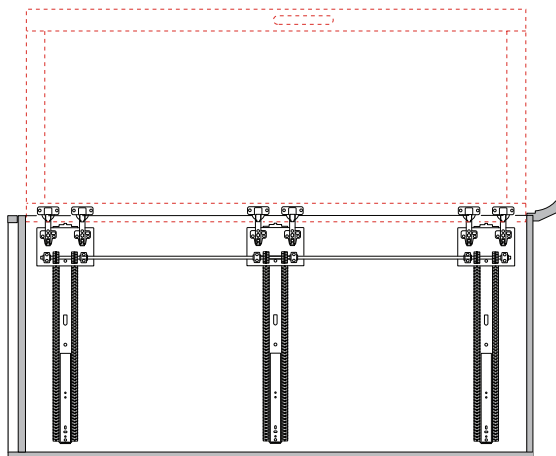
Step #9



Step #10

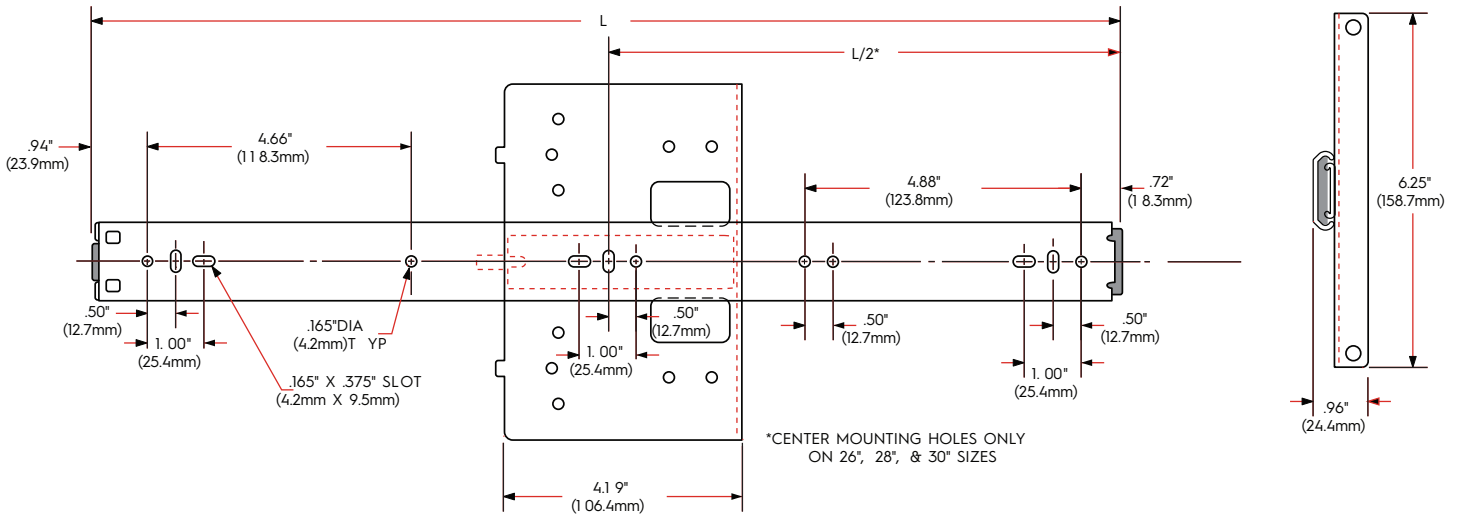


Step #11

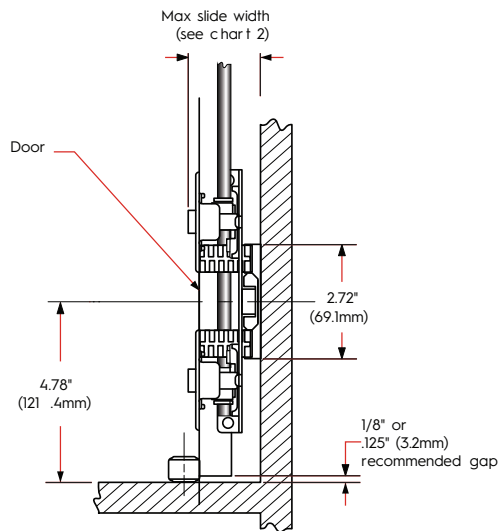




Step #12



Step #13



Step #14

