

**Endura Internal Drawer Kit, 238mm F Height**

**Product Features**

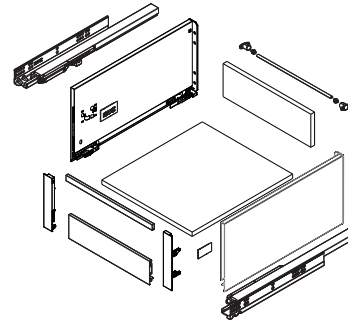


Transform your kitchen with the Legacy Endura internal drawer system, a high-quality and cost-effective solution available in elegant Silk White and stylish Matte Grey. Maximize your space by stacking multiple drawers within a custom pantry or base cabinet, making your kitchen both beautiful and efficient.

- Concealed full-extension soft-close slides
- 238mm drawer side height
- 6-way adjustment: Height (+/- 2mm), Lateral (+/- 1.5mm), Tilt (+0.5mm / -2.5mm )
- Tool free assembly and removal of drawer
- Dynamic load capacity: 40kg (88lbs)

**Internal Drawer Kit (packaged as a complete set)**

- One pair of Full Extension Soft-Close Slides
- One pair of Endura Drawer Sides
- One pair of inner cover caps
- One pair of support brackets for bottom panel
- Additional Parts Required:
  - One 1.1m cut-to-size aluminum drawer front
  - One 1.1m cut-to-size aluminum drawer rail
  - One pair of internal drawer front fixing brackets



**Internal Drawer Kit Ordering Guide**

Length (mm)	Length (Inch)	Matte Grey	Silk White
270mm	11"	105-MS238T-GM270	105-MS238T-SW270
300mm	12"	105-MS238T-GM300	105-MS238T-SW300
350mm	14"	105-MS238T-GM350	105-MS238T-SW350
400mm	16"	105-MS238T-GM400	105-MS238T-SW400
450mm	18"	105-MS238T-GM450	105-MS238T-SW450
500mm	20"	105-MS238T-GM500	105-MS238T-SW500
550mm	22"	105-MS238T-GM550	105-MS238T-SW550
600mm	24"	105-MS238T-GM600	105-MS238T-SW600

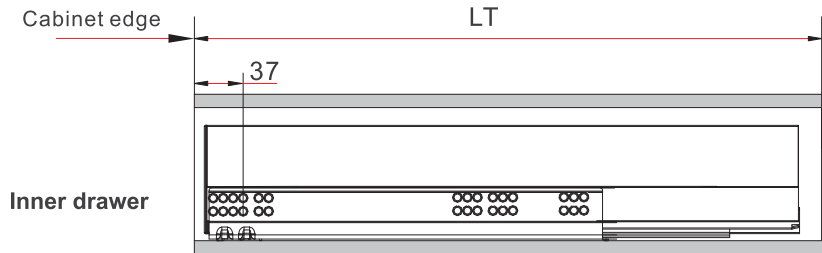
**Additional Parts (Required)**

Description	Part#
Legacy Drawer Front Internal 1100mm GM	105-HT10022-GM
Legacy Drawer Front Internal 1100mm SW	105-HT10022-SW
Legacy Cross Rail Square 1100mm GM	105-HT10071-GM
Legacy Cross Rail Square 1100mm SW	105-HT10071-SW
Front Fixing Plastic Bracket 238mm Height "Grey" for Inner Drawer	105-HD14014X-GM
Front Fixing Plastic Bracket 238mm Height "White" for Inner Drawer	105-HD14014X-SW

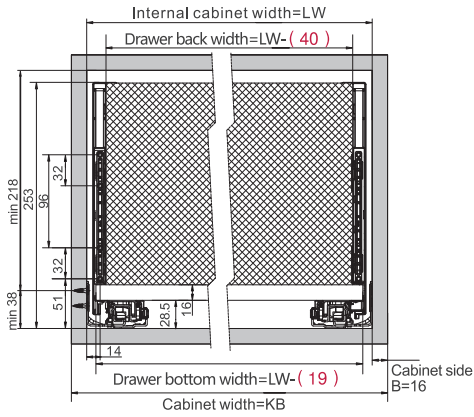


### Installation Dimensions Inner Drawer

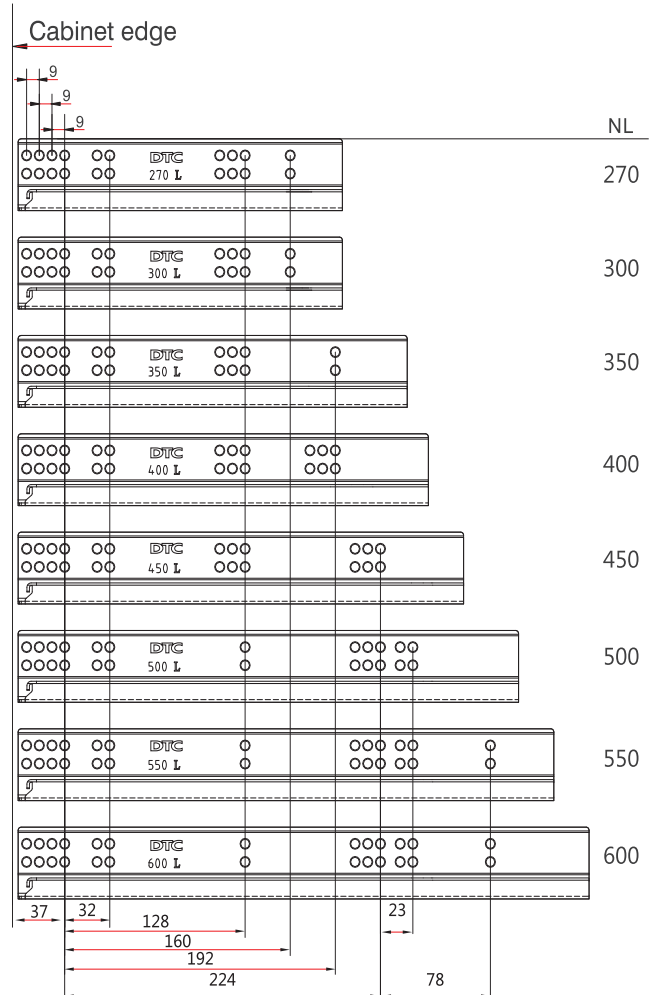
Soft close slides:  $LT = NL + 3$



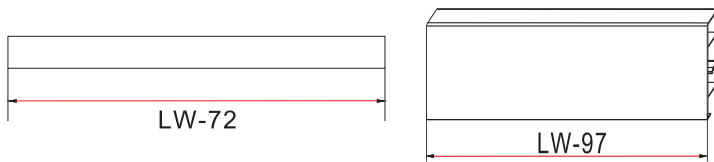
### Space Requirements



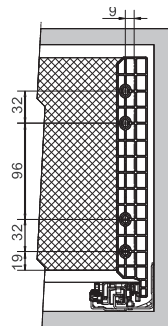
### Drilling Pattern



### "Cut to Length" Cross Rail & Internal Front

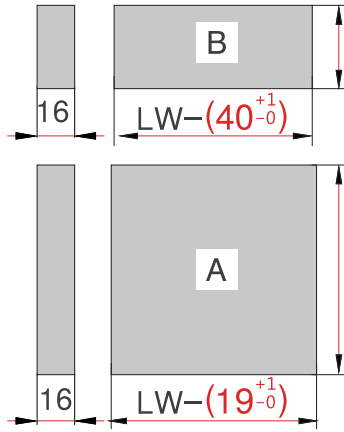


### Back Installation



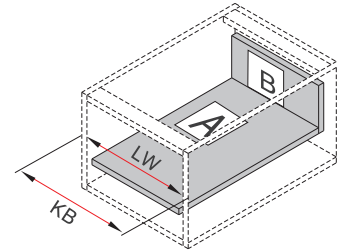


### Back & Bottom Dimensions



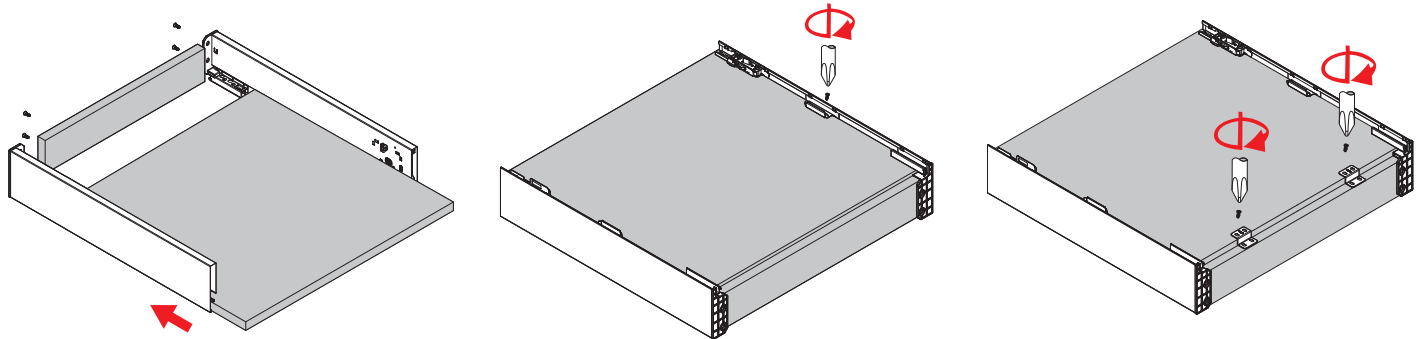
Back  
212mm

Bottom  
NL - (29 +0/-1) mm

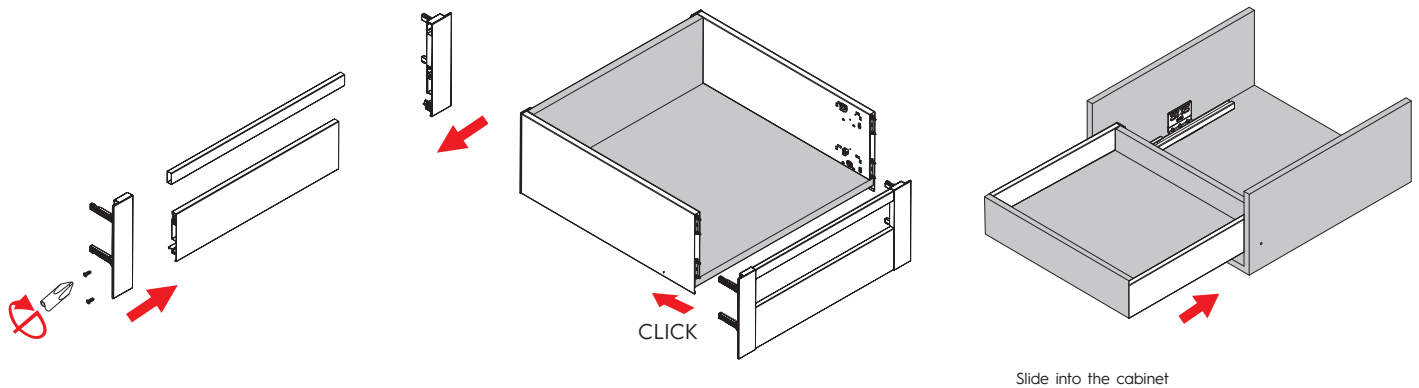


KB Cabinet width  
LW Internal cabinet width  
NL Nominal length

### Bottom & Back Assembly

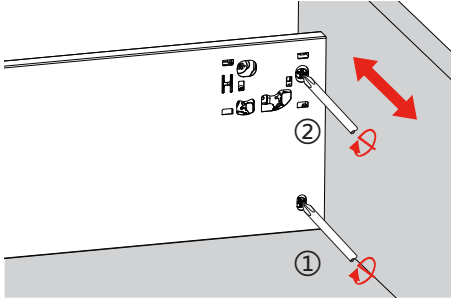


### Drawer Front Assembly

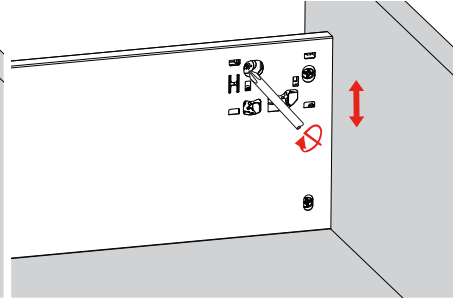




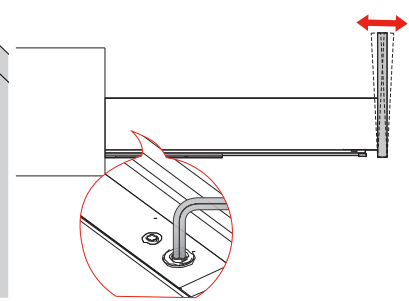
### Adjustments



Lateral adjustment

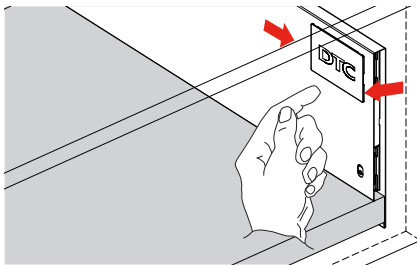


Height adjustment

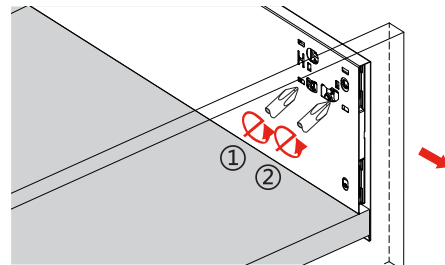


Tilt adjustment (by m3 Allen Key)

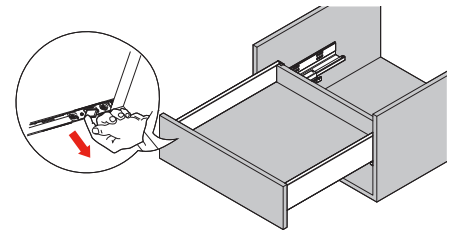
### Removal



Remove the cover cap



Turn screw driver to release the drawer front



Press the locking device under the drawer box and pull out the drawer