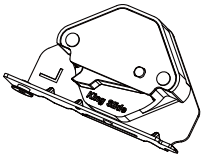
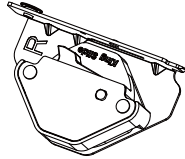


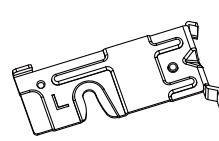
### Components



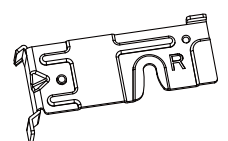
VSD Mechanism (L)X1



VSD Mechanism (R)X1



VSD Engaging Tab (L)X1



VSD Engaging Tab (R)X1

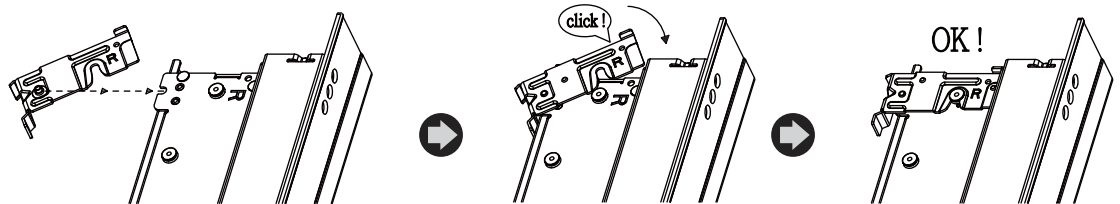
### Installation Instruction

#### Caution!

The front clip must be removed before the installation of VSD accessories. If the front clip is not removed in advance, the drawer box will be stuck and fail to open.

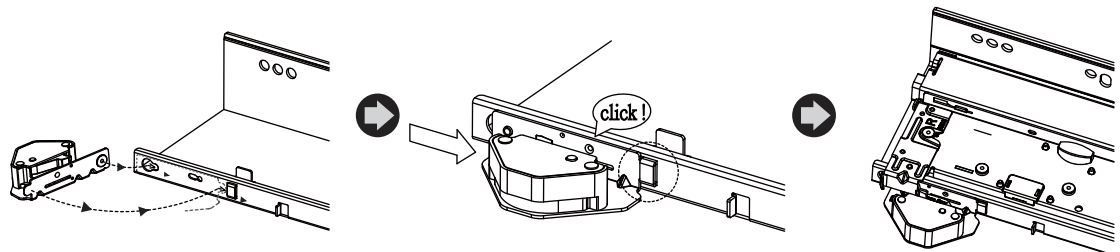
#### A VSD Engaging Tab Installation.

Follow the illustration to attach the tab to slide.



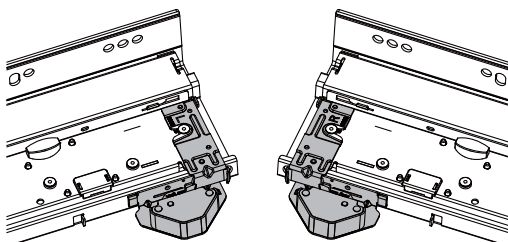
#### B Add On VSD Device Installation.

Pull the slide forward to full extension, and follow the illustration to engage VSD mechanism.

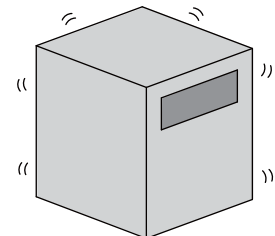
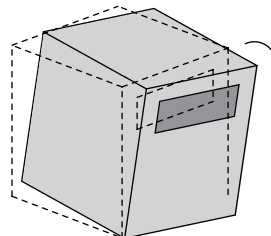


### Functional Instruction

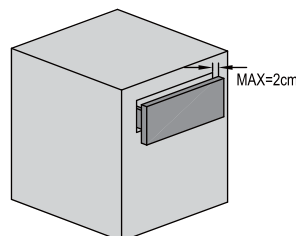
■ Check L/R Sides VSD Mechanism is Properly installed.



■ When Sensing vibration or tilt, VSD will activate to prevent the drawer from opening.



■ When VSD is activated the drawer will not pop open more than 2 cm.



■ Reset of VSD Mechanism

Push the drawer back to closed position, and perform a full cycle of drawer cycle will reset VSD mechanism.

