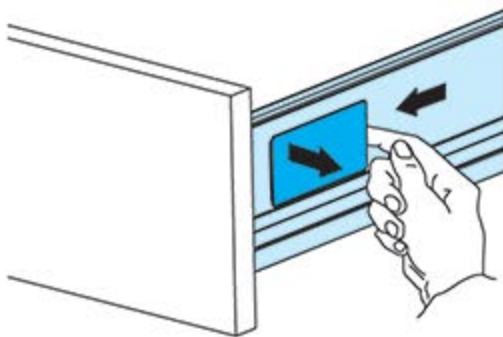


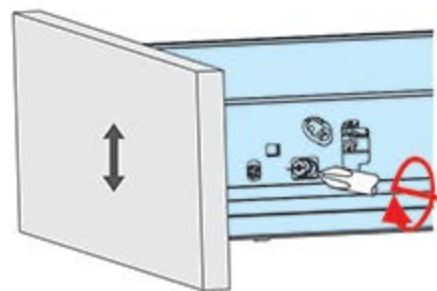
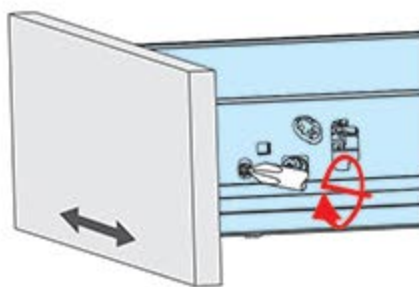
DRAWER ADJUSTMENT INSTRUCTIONS

Infinity
Softclosing Systems by *MARATHON*
FH

1. Remove cover cap on both sides of drawer.



2. Turn the up/down or left/right adjustment screws. There is a maximum of $\pm 2\text{mm}$ height and $\pm 1.5\text{mm}$ lateral adjustment possible.

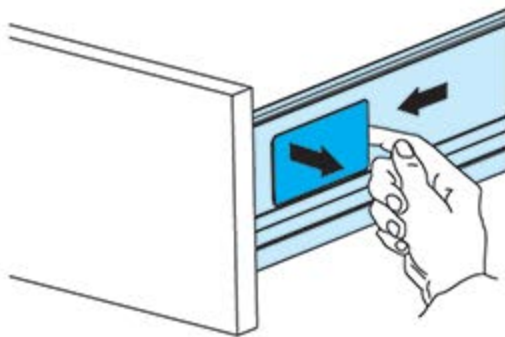


When finished with your adjustments, snap the cover caps back onto the drawer.

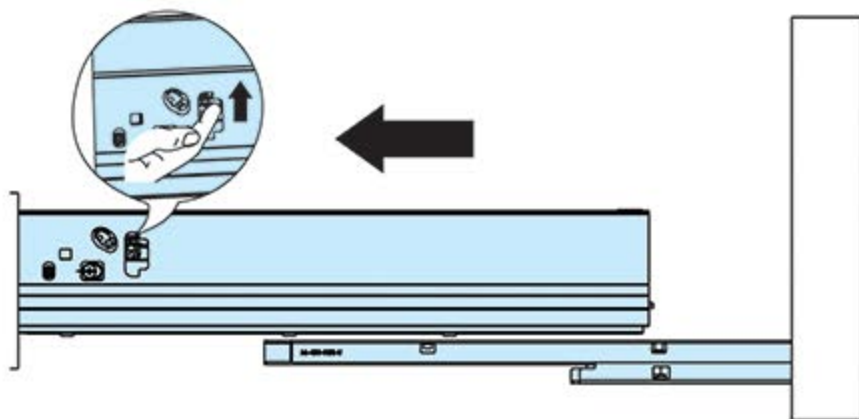
DRAWER REMOVAL INSTRUCTIONS

Infinity
Softclosing Systems by *MARATHON*
FH

1. Remove cover cap on both sides of drawer.



2. Use finger to release drawer on both sides and pull drawer forward to remove from slide.



To re-install, place drawer on extended slides and push the drawer in fully. When it clicks, the lock will be engaged. Replace cover caps on both sides.