

Plate Winged 2mm Titanium Screw-On



Part Number: SBAR3R26

2mm Height, Titanium Domi Snap-On Cross-Shaped, Dual Cam Adjust, Mounting Plates, Wood Screws

Generally we recommend 2mm plates for 3/4in (19mm) and 4mm plates for 5/8in (16mm) thickness gable cabinets.

<p>
</p>

Finish -----	Titanium
Height -----	2 mm
Material -----	Die-Cast
Mounting Type -----	Screw-On
Plate Type -----	Cruciform

Product Description

Cruciform Domi snap-on die-cast mounting plates. Attach using wood screws.

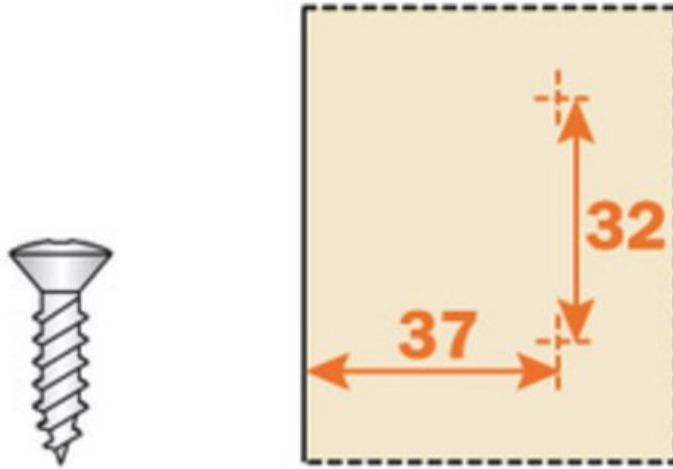
For Salice hinge Series 100, 200, 400, F, B, M and Silentia. Use a 37 x 32 mm drilling pattern.

Product Advantages

These cross-shaped plates with quick-release and easy to assemble Domi Snap-on feature, provide a good balance of performance, durability, and strength.

- Compatible with Series 100, 200, F, M and all Silentia (700, 200, 100 Series) Hinges.
- 37x32 mm drilling pattern.
- Depth/Height cam adjustment
- Material is steel and diecast

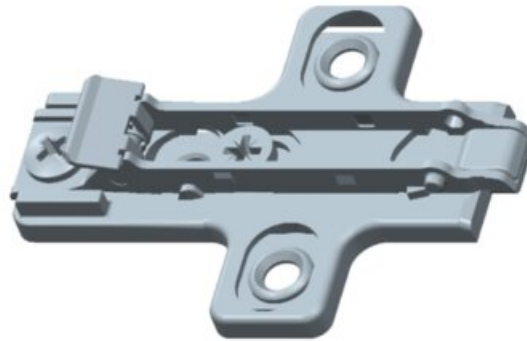
Technical Documents



View this product online at <https://marathonhardware.com/pd/SBAR3R26>



Technical Documents



View this product online at <https://marathonhardware.com/pd/SBAR3R26>

