



Hinge 106°, 1-1/4" Overlay, Dowels, 2-Way Cam

Part Number: SCSR3A99N

Salice Face Frame Hinge 106°, 1-1/4" Overlay, Dowels, 2-Way Cam

Salice Face Frame Hinge 106°, 1-1/4" Overlay, Dowels, with 2-way Cam Adjustments

<div>
</div>

Adjustment Type	2-Way Cam Adjust
Angle	106
Application Type	Face Frame
Closing Type	Self-Close
Door Type	Face Frame
Finish	Nickel
Hinge Cup Depth	11
Hinge Door Thickness	Up to 3/4" Thick
Mounting Type	Dowels
Overlay	1-1/4 in

Product Description

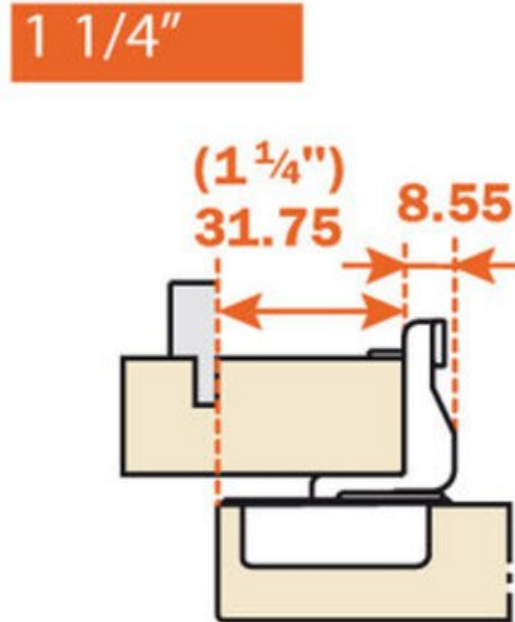
Salice Excentra Face Frame hinges enable easy and simple installation while combined with their superior technical features ensuring that you receive a reliable and consistent door action. These low-profile, one-piece face frame hinges provide eccentric cams for two way adjustments, including side-to-side and in-and-out, providing you with perfect alignment. Available in both screw-on and doweled versions, they will enable long-lasting attachment to the frame with superior stability and zero door protrusion. Expect a lifetime of smooth opening and closing in your kitchen when you pick Salice.

Product Advantages

- Salice provides a lifetime warranty
- Precise door alignment
- Zero door protrusion
- Boring pattern same as the industry standard



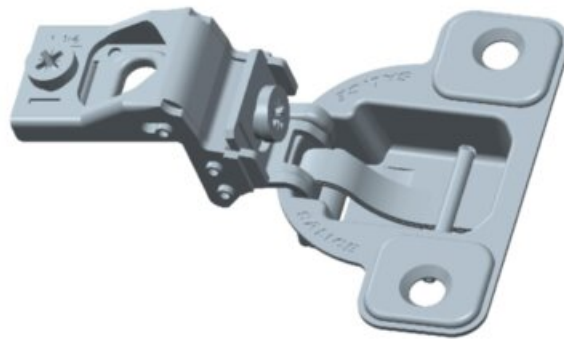
Technical Documents



View this product online at <https://marathonhardware.com/pd/SCSR3A99N>



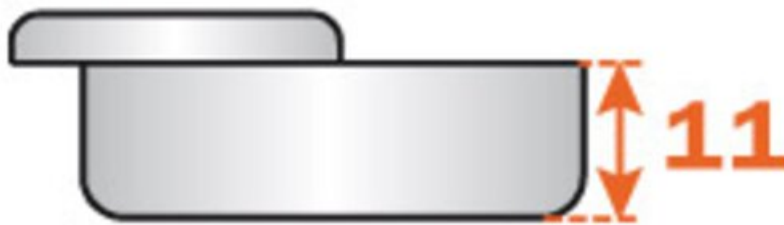
Technical Documents



View this product online at <https://marathonhardware.com/pd/SCSR3A99N>



Technical Documents



View this product online at <https://marathonhardware.com/pd/SCSR3A99N>

Technical Documents

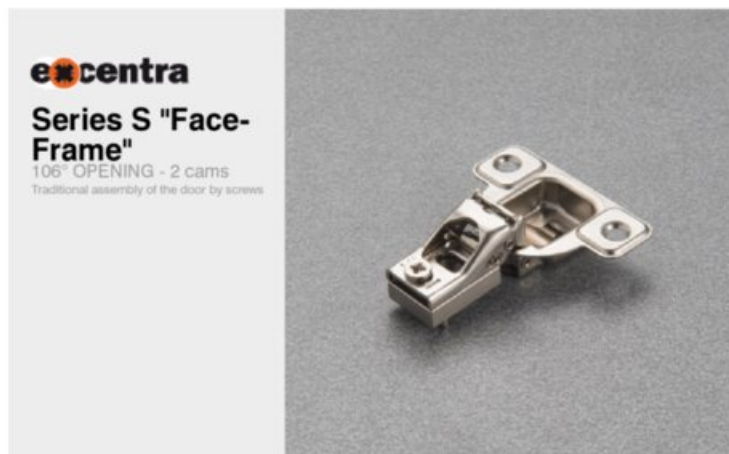


SALICE



hinges

automatic closing / face frame hinge / standard applications



Stamped steel.
Cup depth 11 mm (7/16").
Opening 106° degrees.
Drilling distance (K) fixed at 2.5 mm (3/32").
Gap between door and frame (L) = 4.6 mm.



For overlays from 1/4" through 3/4" the "A" value (Reveal) = 8.3 mm for (21/64") square edge doors at 90° opening.

For overlays from 1" through 1-7/16" the "A" value (Reveal) = 5.2 mm for (3/4") square edge doors at 90° opening.

ARTURO SALICE S.p.A. (Incorporated in Italy)
Via Provinciale Novaresa, 10
22060 NOVARATE (COMO) ITALIA
TEL. 031 760424
FAX 031 771608
info.salice@salice.com

www.salice.com
CAPITAL SOC. € 28.000.000 I.V.
S.P.A. P. N. N. 00211650330
REG. IMPRESSE COMO 00211650330
SCA COMO 1790168

DEUTSCHE SALICE GmbH
TALBURG WERKZEUGEINGEBOUE
www.salice.de
SALICE UK Ltd.
HUNTINGDON CAMBS PE28 6PN
www.saliceuk.co.uk

SALICE FRANCE S.A.R.L.
DESIGN ARTISAN
www.salicefrance.com
SALICE CANADA Inc.
MONTREAL-QUEBEC L3H 5Y1
www.salicecanada.com

SALICE AMERICA Inc.
CHARLOTTE NC 28227
www.saliceamerica.com
SALICE ESPAÑA, S.L.
GRAN VILLAJO
www.saliceespana.es

View this product online at <https://marathonhardware.com/pd/SCSR3A99N>

